

**CITY OF SHEFFIELD - MEMORANDUM
PLACE**

From: Highway Records
Highway Maintenance Division
Operational Services

To: For Closure File

Date: 20 March 2025
Ref: HM/HR/4048/NM
Tel: 0114 273 6125

Town and Country Planning Act 1990 – Section 247

Permanent Closure of part of Milton Street and part of Hanover Way

Following successful completion of the legal processes, I can confirm on behalf of the Highway Authority that the above legal order has been fully implemented.

Highway Records
Highway Maintenance Division

TOWN AND COUNTRY PLANNING ACT 1990

THE STOPPING UP OF HIGHWAY (YORKSHIRE AND THE HUMBER) (NO.34) ORDER 2019

The Secretary of State makes this Order in exercise of powers under section 247 of the Town and Country Planning Act 1990 ("the Act").

1. The Secretary of State authorises the stopping up of the highway described in the Schedule to this Order and shown on the plan, in order to enable development to be carried out in accordance with the planning permission granted by Sheffield City Council under reference 18/03849/FUL.

2. Where immediately before the date of this Order there is any apparatus of statutory undertakers under, in, on, over, along or across any highway authorised to be stopped up pursuant to this Order then, subject to section 261(4) of the Act, those undertakers shall have the same rights as respects that apparatus after that highway is stopped up as they had immediately beforehand.

3. In this Order

"the plan" means the plan numbered NATTRAN/Y&H/S247/3713, marked "Highway at Sheffield in the City of Sheffield", signed by authority of the Secretary of State and deposited at the Department for Transport, Deposit Document Service, F Floor, Ashdown House, St Leonards-on-Sea, Hastings, East Sussex TN37 7GA.

4. This Order shall come into force on the date on which notice that it has been made is first published in accordance with section 252(10) of the Act, and may be cited as the Stopping Up of Highway (Yorkshire and the Humber) (No.34) Order 2019.



Signed by authority of
the Secretary of State
30 August 2019

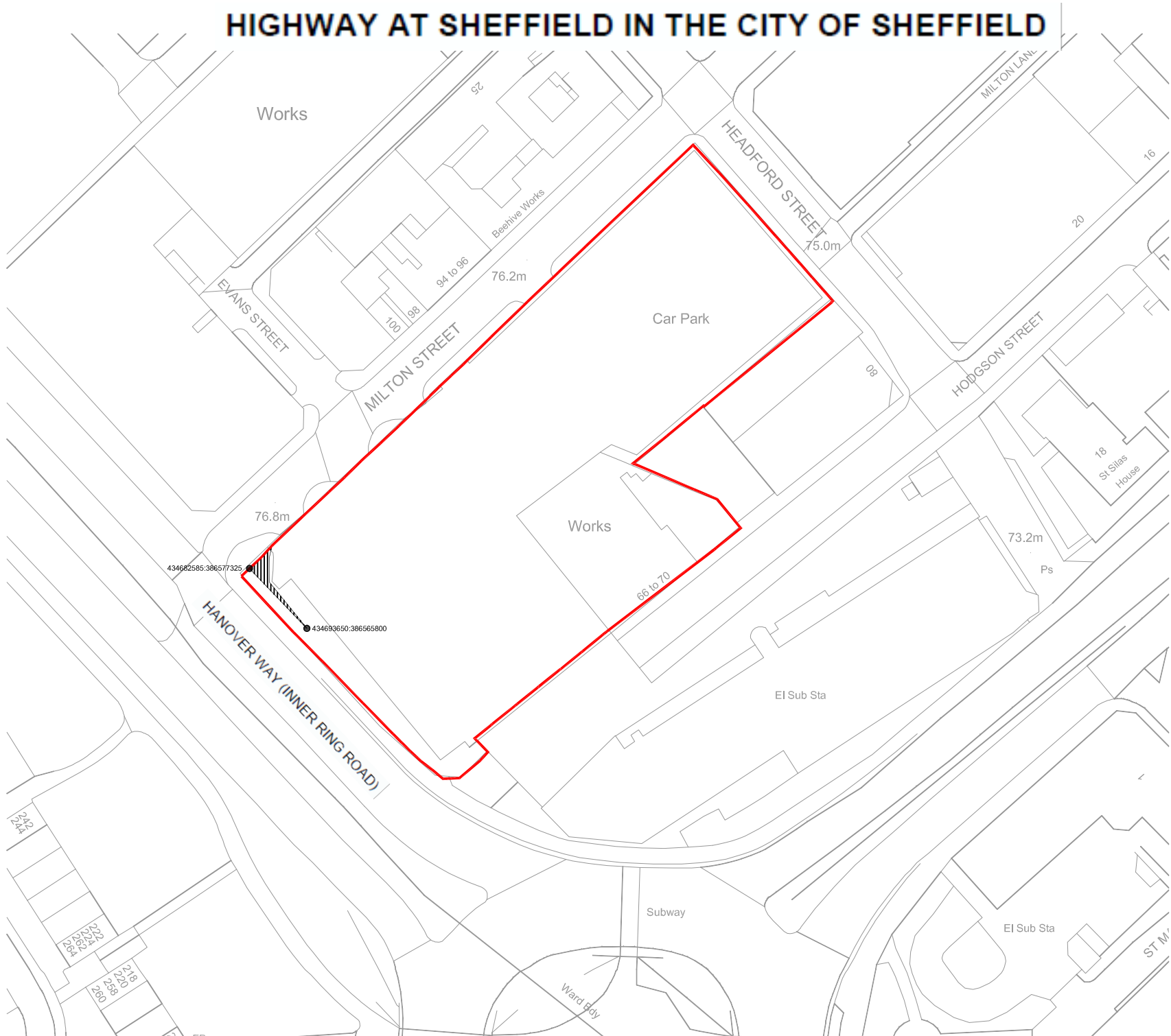
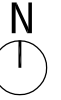
DAVE CANDLISH
An Official in the
National Transport Casework Team
Department for Transport

THE SCHEDULE

Description of highway to be stopped up

The highway to be stopped up is at Sheffield in the City of Sheffield, shown on the plan as an irregular shaped eastern part width of Hanover Way (Inner Ring Road) at its junction with Milton Street. It commences 2 metres north east of the north western boundary of the former surface car park site and extends south eastwards for a maximum distance of 16 metres with a maximum width of 6.5 metres.

HIGHWAY AT SHEFFIELD IN THE CITY OF SHEFFIELD



Key	Scale 1:1000 at A4
Highway to be stopped up	
National Transport Casework Team	
Department for Transport	
Plan No: NATTRAN/Y&H/S247/3713	
Signed by Authority of the Secretary of State on 30 August 2019	
Signature.....	
DAVE CANDLISH An Official in the National Transport Casework Team Department for Transport	