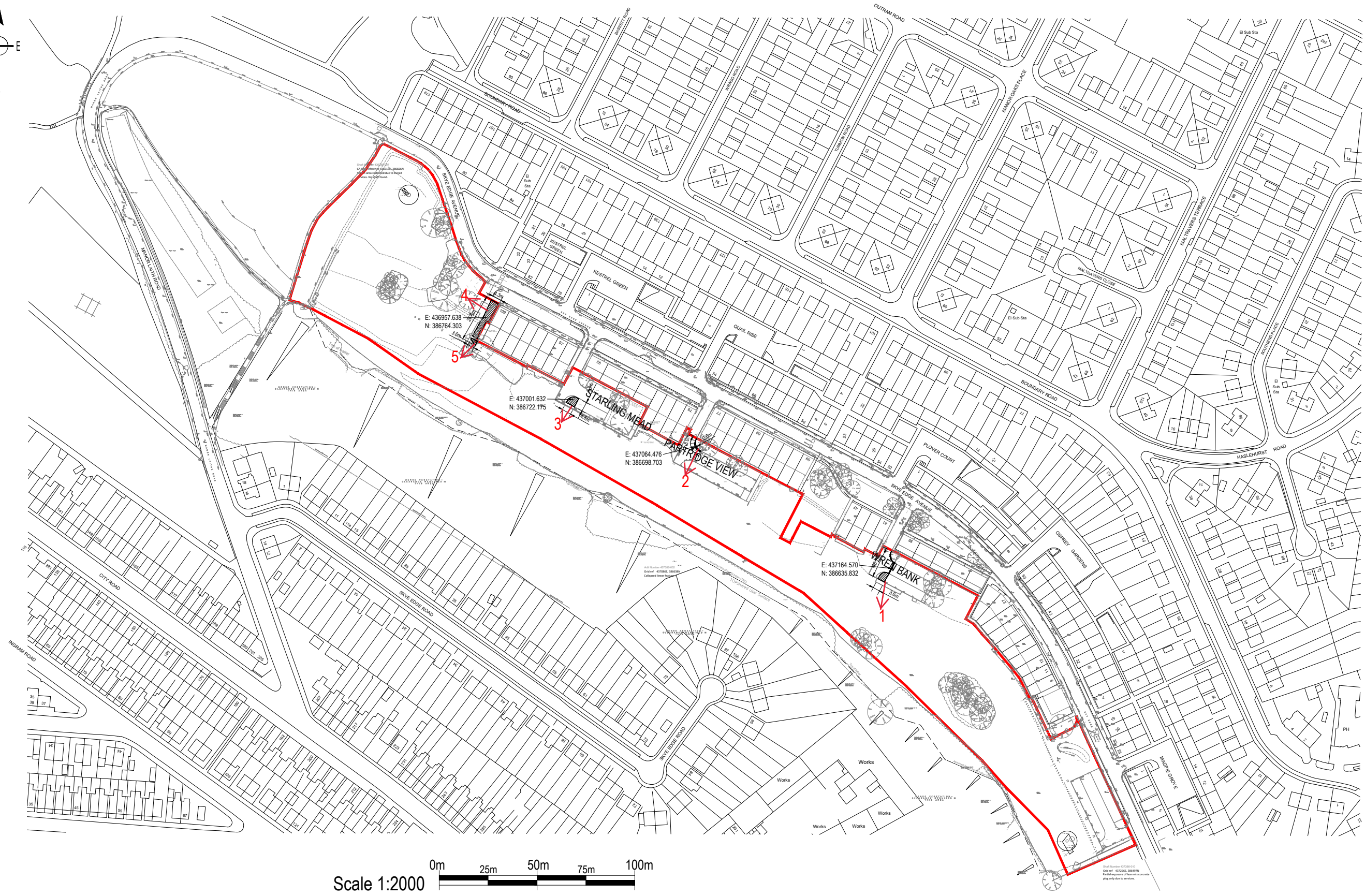


HIGHWAY AT SHEFFIELD IN THE CITY OF SHEFFIELD



Scale 1:2000

<p>Key</p>	<p>Scale 1:2000 @ A3</p>	<p>National Transport Casework Team</p>
<p>Highway to be stopped up</p>		<p>Department for Transport</p>
<p>Plan No: NATTRAN/Y&H/S247/3728</p>		<p>Signed by Authority of the Secretary of State</p>
		<p>13 June 2019</p> <p>on.....</p> <p>Signature..... </p> <p>DAVE CANDLISH An Official in the National Transport Casework Team Department for Transport</p>



Highway Records
Streetscene and Regulation
Howden House
Union Street
Sheffield
S1 2SH

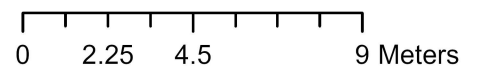
De-accrual of areas of carriageway and grounds maintenance at Starling Mead



Date: 20/06/2023



Scale: 1:200



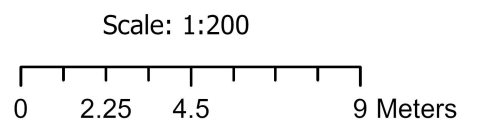
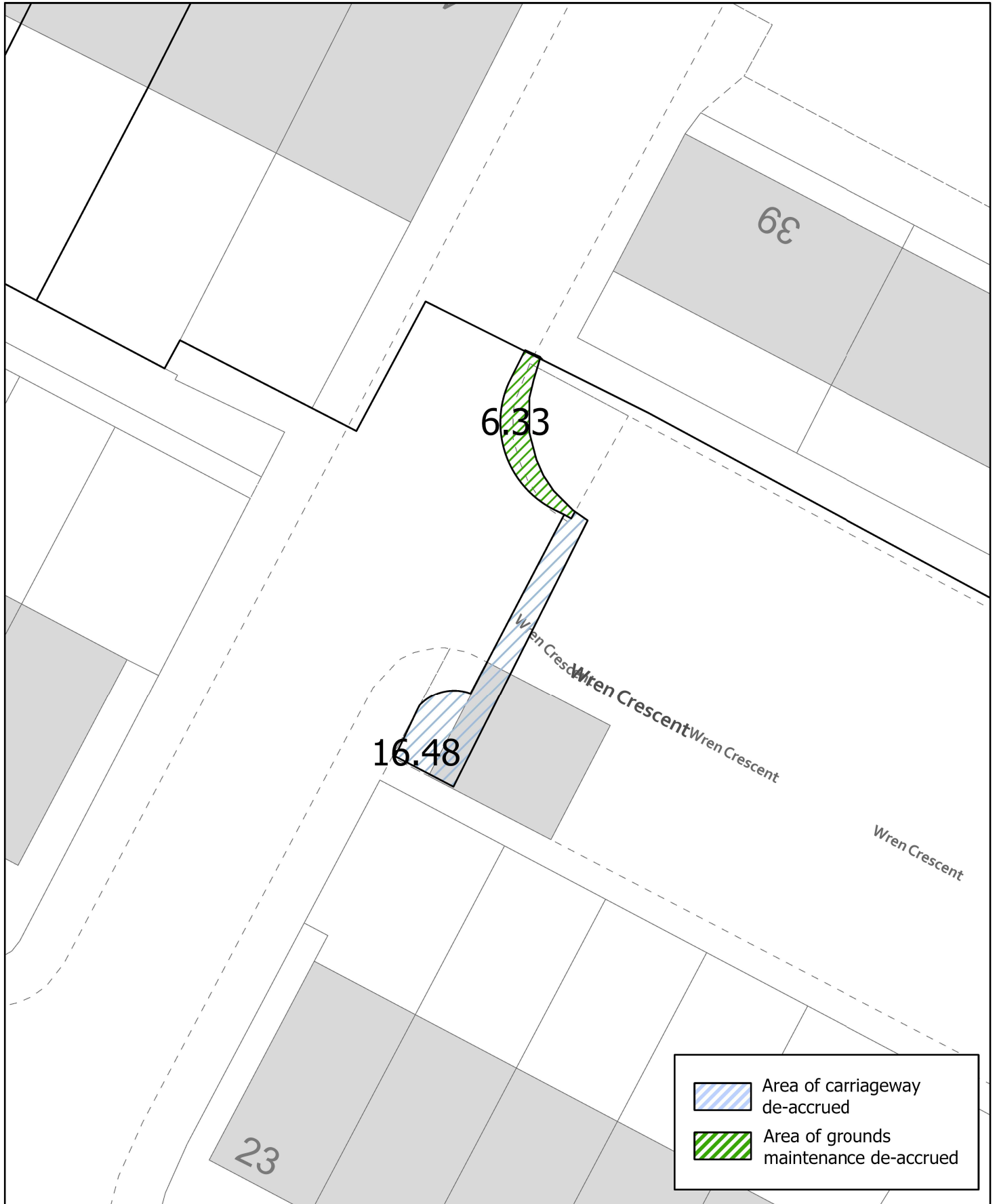


Highway Records
Streetscene and Regulation
Howden House
Union Street
Sheffield
S1 2SH

De-accrual of areas of carriageway and grounds maintenance at Wren Crescent



Date: 20/06/2023



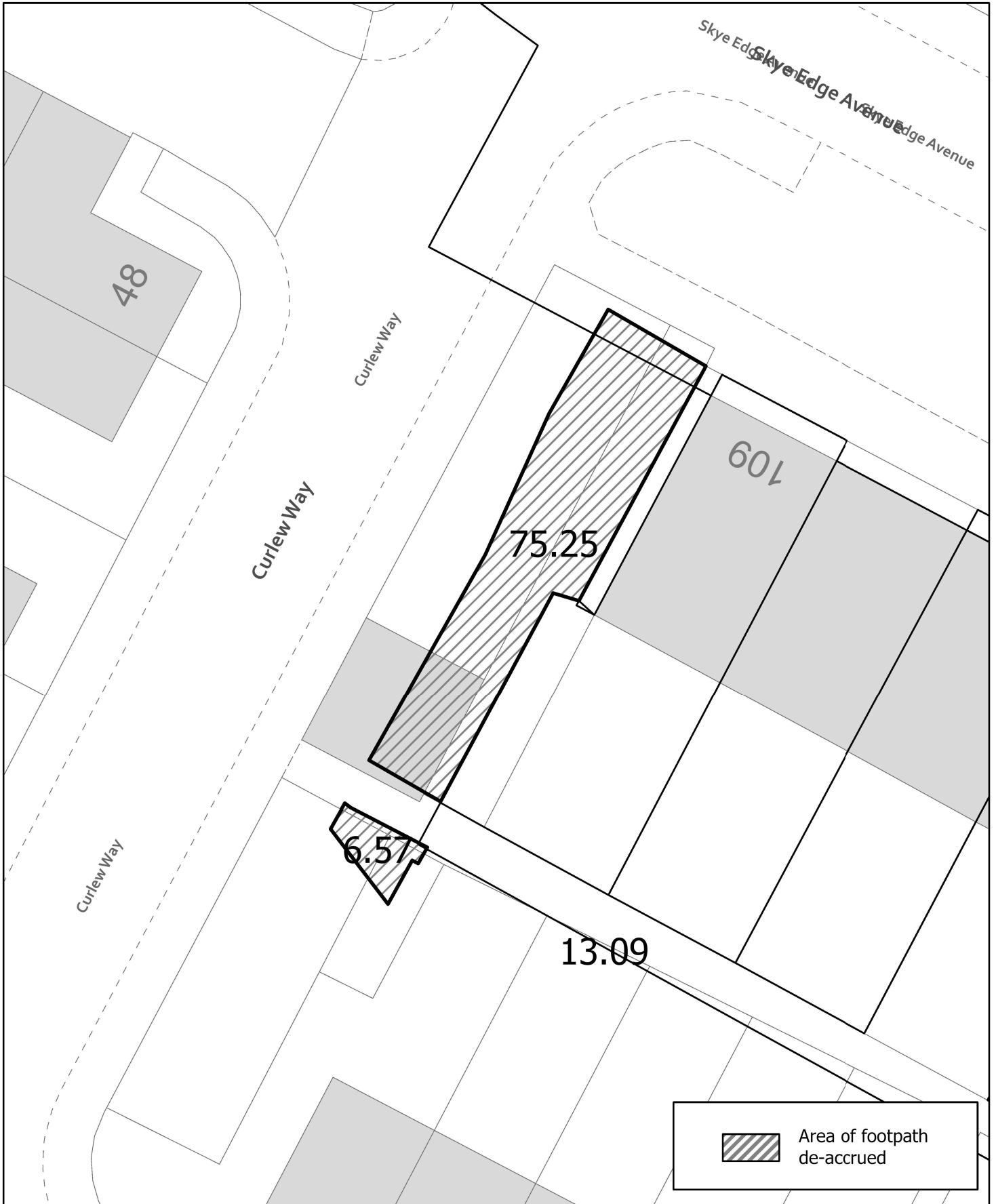


Highway Records
Streetscene and Regulation
Howden House
Union Street
Sheffield
S1 2SH

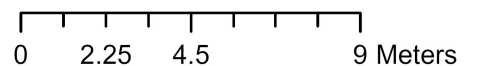
De-accrual of footpath off of Skye Edge Avenue



Date: 20/06/2023



Scale: 1:200





Highway Records
Streetscene and Regulation
Howden House
Union Street
Sheffield
S1 2SH

De-accrual of area of grounds maintenance at Partridge View



Date: 20/06/2023



Scale: 1:200

