

Information Pack for Applicants Finance Officer



Minerva
Learning Trust

The Trust is committed to safeguarding and promoting the welfare of children and young people and expects all staff to share this commitment.

The Trust will undertake stringent and rigorous checks of identity and qualifications to ensure that we maintain the very highest standards of child protection for our students.



Contents

Section 1: Post Advertisement.....	1
Section 2: Letter from the Chief Executive - Bev Matthews	3
Section 3: About our Trust.....	4
Who We Are	4
What We Do.....	5
Why We Exist	5
Our Mission, Vision, Values and Beliefs.....	6
Our Schools.....	6
Section 4: Valuing our Staff	8
Why Choose to Work for Minerva Learning Trust?	8
Section 5: Governance and Leadership Structure.....	11
Members	11
Trustees/Directors.....	11
Section 6: Job Description.....	13
Section 7: Person specification	16
Section 8: The Appointment Process.....	17

May we take this opportunity to thank you in anticipation of your application. If, however, you have not heard from us by the proposed date for the interview you should assume that on this occasion your application has not been successful. In that event we wish you every success in any future applications you make.

Section 1: Post Advertisement

Post: Trust Finance Officer
Location: Central Office
Pay scale: NJC Grade 7, Point 27-31 (£33,820 - £37,261) – pay award pending
Contract: Full time, Permanent (37 hours x 52 weeks)
Start date: As soon as possible

Minerva Learning Trust is an expanding Sheffield based Multi Academy Trust with a vision of providing outstanding education for all the students within our schools. The Trust is passionate that all students should see their time at school as happy and fulfilling with their potential developed to the utmost.

We are looking for an experienced finance practitioner to work under the leadership of the Trust's Finance Director. The successful candidate will:

- be self-motivated and have the ambition to develop as a leader with the support from the Trust.
- have good interpersonal skills that ensure organisational communication is effective and ensuring our schools feel fully supported.
- work in liaison with the Finance Director to ensure the accuracy and sound control of financial transactions in line with the Trust Finance Policy and statutory frameworks.
- have experience of financial management including performing month end procedures and preparation of accounts to trial balance, reconciliations, administration of income and expenditure and support for budget management and monitoring processes
- support the work of the Trust Finance Assistant
- have a good understanding of current financial rules and regulations.
- be able to work with Trust Central Team and School Finance colleagues to contribute to the management of workloads and help develop them as individuals.

In return the successful candidate will:

- Be a member of the Trust Central Team and join a strong and dynamic team of professionals across our organisation.
- Be supported in the continued development of a career in Finance.
- Have access to the Trust comprehensive professional development programme.
- Have access to the local government pension scheme and terms and conditions aligned to the National Joint Council for Local Government Services

Candidates can find out more about the Trust and our schools via the Trust website www.minervalearningtrust.co.uk Further information about the role is available by contacting HR via e-mail: recruitment@minervalearningtrust.co.uk

The closing date is 9:00 am on Wednesday 15th November 2023 and interviews will take place on Tuesday 21st November 2023.

The Trust is committed to safeguarding and promoting the welfare and safety of children and young people and expects all staff to share this commitment, further information can be found in our child protection and

safeguarding policy on our statutory information page on our website [Minerva Learning Trust](#). The successful candidate will be required to complete an Enhanced Disclosure and Barring Service (DBS) check.

The application form and information pack is available on the trust website www.minervalearningtrust.co.uk
Please ensure that you do not fill in a Sheffield City Council application form in respect of this vacancy as your application may not be considered

Section 2: Letter from the Chief Executive - Bev Matthews

Dear Candidate

Thank you for taking the time to consider our vacancy within Minerva Learning Trust.

Minerva Learning Trust was established in October 2014 with the vision of providing outstanding education for pupils who are from a wide variety of backgrounds across the city of Sheffield. During 2017-2018 the Trust brought together four secondary schools to create a new partnership which will support the teaching and learning of around 5000 pupils. Most recently, we have been joined by Chapeltown Academy which will enhance the post-16 provision within the north of the city and by Woodthorpe Community Primary School who are the first primary school to join our Trust. We resolutely believe that we are stronger together and that each school within the MAT has individual strengths and we celebrate the diverse and unique qualities of each particular school.

As a Trust our mission, vision and values are central to our work and are the driving force behind all that we do. Our vision of Working Together, Learning Together and Outstanding Together is underpinned by our core values of Inclusion, Independence, Respect and Success. Through our values we foster an ethos of collegiality, we ensure inclusion is at the heart of all we do and we work hard to ensure that every child succeeds, no matter what their background or circumstance.

We recognise that the commitment and care shown by all our staff is fundamental to the success of our young people. As such, we work hard to ensure that staff are supported, encouraged, developed, respected and listened to within an enjoyable and rewarding working environment. Our culture is one of professional trust, respect, honesty and integrity and we want our staff and students to work and learn within an environment that enables them to flourish and to work at their best.

The role of HR Adviser presents an exciting opportunity to join our Trust and contribute to the development and delivery of our central HR service. The role would suit someone who is looking for the next step in their HR career and is committed to their development in this role.

If you choose to apply you will be choosing to work alongside a team of dedicated professionals who passionately believe in the power of education to change the life chances of young people.

If you believe you have the experience, skills and ambition to support our aims and contribute to the delivery of the very best for our pupils then we look forward to receiving your application.



Bev Matthews
Chief Executive Officer

Section 3: About our Trust

Who We Are

Minerva Learning Trust is an educational charity that has the single objective 'to advance education for public benefit'. As such:

- The Trust is legally accountable for the education of every child, the professional performance of every employee and the health and safety of the working environment
- The workforce is a single "faculty of education" who work together even though their places of work are located on different school sites
- The Board of Trustees, who are appointed by the members are the governing body of the Trust. Every other governance group is a sub-committee, including Local Governing Bodies
- The CEO is the Accountable Officer

The Trust was established in October 2014. Our vision is to provide outstanding education for students who are from a wide variety of backgrounds across the city of Sheffield.

The Trust is an expanding Sheffield based Multi Academy Trust with a vision of providing outstanding education for all the students within our schools. During 2017/2018 the Trust brought together four secondary schools to create a new partnership which supports the teaching and learning of around 5,500 students.

In September 2020, Chapeltown Academy converted to academy status with Minerva, this has enhanced the post-16 provision within the Trust in the north of the city. In addition, September 2021, Woodthorpe Community Primary became the first primary school to join our Trust as we begin an exciting expansion into the primary phase.

We resolutely believe that we are stronger together and that each school within the MAT has individual strengths and we celebrate the diverse and unique qualities of each particular school. The Trust is passionate that all students should see their time at school as happy and fulfilling with their potential developed to the utmost.

Minerva Learning Trust is led by Bev Matthews, Chief Executive Officer and Ed Wydenbach, Chair of the Trust Board. Bev is an experienced Headteacher and School Improvement leader. Ed is an experienced Governor and is a National Leader of Governance (NLG).

The Trust employs just under 800 staff across our schools and central services and we are committed to providing career opportunities and professional development which allows people to make a positive contribution to the delivery of our vision.

What We Do

Our aim is to deliver an outstanding education for all students, staff and stakeholders.

We do this through an ethos of collegiality, placing students at the centre of all that we do. We are an inclusive Trust; our students show a high level of care for each other and respect each other's diversity. We do not allow disadvantage to be a barrier to learning and we support all our students to be the very best.

Why We Exist

As a Trust our mission, vision and values are central to our work and are the driving force behind all that we do. Our vision of Working Together, Learning Together and Outstanding Together is underpinned by our core values of Inclusion, Independence, Respect and Success. Through our values we foster an ethos of collegiality, we ensure inclusion is at the heart of all we do, and we work hard to ensure that every child succeeds, no matter what their background or circumstance.

We recognise that the commitment and care shown by all our staff is fundamental to the success of our young people. As such, we work hard to ensure that staff are supported, encouraged, developed, respected, and listened to within an enjoyable and rewarding working environment. Our culture is one of professional trust, respect, honesty and integrity and we want our staff and students to work and learn within an environment that enables them to flourish and to work at their best.

Our Mission, Vision and Values

OUR MISSION

To provide an outstanding education for students, staff and stakeholders within the Trust.

OUR VISION

Our mission is underpinned by our vision that we are 'Stronger Together' by:

'Working Together'

Our students, staff and stakeholders work in partnership to maximise attainment and achievement and create successful and confident citizens.

'Learning Together'

Our students, staff and stakeholders learn collaboratively with each other to develop a highly skilled workforce which impacts positively on students' life chances.

'Outstanding Together'

Our students, staff and stakeholders work tirelessly, effectively, and efficiently to develop an outstanding quality of education in all our schools.

OUR VALUES

Our values underpin all of the work that we do and all of the decisions that we make.

Inclusion

We place the needs of our students at the heart of everything we do and we all support and encourage each other.

Independence

We promote and support strong leadership within our students, staff and stakeholders and we are all accountable for each other.

Respect

We recognise and appreciate the diverse qualities of our students, schools and stakeholders and we all care for each other.

Success

We celebrate and communicate our successes, share good practice and we all promote a culture of continuously learning from each other.

OUR BELIEFS

- We believe that we will have a significant impact on young people in Sheffield by providing outstanding provision.
- We believe that we can empower existing and aspiring leaders to drive school improvement.
- We believe that through a quality education we can support students to be successful in life after school and to positively contribute to society.
- We believe that a child's background and circumstances should not pre-determine their future.
- We believe that we can enrich the learning experience for all our students by providing aspirational opportunity beyond the classroom.

Our Schools

Minerva Learning Trust is one of the largest Multi Academy Trusts in Sheffield with over 5,000 students. We are very proud of all our schools. Each school serves a very different community within Sheffield, which contributes toward the inclusive nature of the Trust and is something we are very proud of.

The benefits of this means that we have schools in close proximity to each other which provides huge opportunities for staff and students alike to work with and learn from each other. No school is seen as the lead school and every school within the Trust is expected to be a 'giver' and 'receiver' of support.

We have a shared set of values and a common mission which ensures that every child receives the education they deserve. Each school within the Trust retains its cultural autonomy but we work together to ensure best practice becomes shared practice.

Each of our schools is led by a Headteacher with a Senior Leadership Team of Deputy and Assistant Headteachers. Headteachers are responsible for the overall success of the school and for developing a professional and effective working relationship with the Local Governing Body.

Together, We are Minerva



Schools within our Trust are listed below, alongside an overview of their context

Academy	Age range	Pupil Admission Number
Chapeltown Academy	16-19	300
Ecclesfield School	11-16	1750
Handsworth Grange	11-16	1025
High Storrs School	11-18	1650
Stocksbridge High School	11-16	900
Woodthorpe Community Primary School	3-11	455

Section 4: Valuing our Staff

Why Choose to Work for Minerva Learning Trust?

The Trust recognises that the commitment and care shown by all our people are fundamental to the success of our young people and we promise our staff that they will be supported, encouraged, developed, respected and listened to within an enjoyable and rewarding working environment.

Our culture is one of professional trust, respect, honesty and integrity and we want our staff and students to work and learn within an environment that enables them to flourish and to work at their best.

Wellbeing Charter

Alongside students, our staff are our most important asset, and we are committed to being an employer of choice across our region. A happy and healthy workforce is vital for the success of our students and we are developing our approaches to staff wellbeing. The charter below gives a flavour of our thinking and direction of travel toward ensuring our Trust is a great place to work.

Emotional Pillar

An employee assistance programme with a confidential helpline that any member of staff can ring for support at any time.

Swift referrals to Counselling support and services and bespoke paid support for colleagues who are particularly struggling.

Workload Impact Assessment of new policies to ensure that they are manageable and reasonable.

Work-life Balance Policy and Charter which ensures staff are able to manage their workload.

Job opportunities shared across the Trust.

CPD and networks for teachers and support staff.

Staff voice including an annual Trust-wide survey.

Supportive arrangements including induction for new staff.

Open door policies for SLT.

Line manager support through regular 1:1 and team meetings.

Clear expectations for all staff (e.g. Code of Conduct and professional standards).

Access to onsite Mental Health First Aiders.

An MLT Wellbeing ROUTES CPD programme.

Social Pillar

Supportive policies (e.g. flexible working, maternity, paternity, shared parental leave, KIT days and leave of absence).

CPD and networks for teachers and support staff.

Working partnerships with local and regional union representatives.

Approaches across the Trust to celebrate staff as individuals and as a team.

Careful planning of meetings calendars and INSET time to allow staff to meet whilst maintaining a reasonable work-life balance

Designated social spaces in each school to allow time for rest and reflection.

A designated Wellbeing Working Group in each school.

A clear Equality Statement and community that is proactive in supporting diversity and inclusion.

A commitment to collect, analyse and respond to exit interview findings.

Dedicated mentoring support for NQTs and a buddy system for all new staff.

Access to coaching support as part of the Trust's professional development programme.



Physical Pillar

Supportive policies (e.g. work-life balance, flexible working, time off for medical screening and hospital appointments, reasonable adjustments, support for specific issues such as menopause, dementia, cancer, disabilities).

Occupational Health referrals.

Wellbeing sessions for staff (when and where appropriate) and access to resources such as gyms.

Estates management across the Trust to ensure that all staff experience a warm, safe and healthy environment.

Support for the Cycle to Work Scheme.

Individual Risk Assessments for staff facing challenges.

Wellbeing initiatives include cross Trust events.

A commitment to review workload regularly and make changes where possible.

Access to free eye tests for routine users of Display Screen Equipment.

Financial Pillar

Support for courses to prepare for retirement.

Access to enrolment in a defined benefit Pension Scheme (TPS or LGPS).

Access to pensions advice and additional voluntary contributions.

Ensuring that redundancies are a last resort when budgets necessitate changes.

Transparent and clear pay progression policies and collective bargaining with Trade Union colleagues in respect of national and local agreements.

Support for the childcare voucher scheme for eligible employees.

Employer rate and arrangements for deduction from employee's pay through payroll for health care e.g. Westfield Health.



Workload Charter

Our Workload Charter sets out our commitment and offer to support the workload and work/life balance of our staff.

Culture Matters

We all have a responsibility to manage our own workload and that of others. Line management meetings exist to discuss concerns and find solutions.

Line Managers are encouraged to ensure fairness across teams of the delegation of tasks and workload.

The need for change is well planned for and effectively communicated to key stakeholders. Training and time is allocated to ensure that the change is successful.

The Trust / School Calendar is planned with workload in mind and the timing of tasks and projects are adjusted during busy periods.

Opportunities are provided and time is given to support school-school collaboration and reduce the replication of effort.

Research-informed teaching methods are embraced. Staff are empowered to deliver learning that meets the needs of our students in line with teaching and learning principles.

Additional provision is strategically planned for revision sessions with an identified need in mind.

Our schools are calm and safe places to work and learn. A strong behaviour policy is in place in all schools which is consistently applied. Staff, parents and students are aware of the policy and expectations.

TIME Matters

No expectation of staff to respond to emails outside working hours. Except relating to serious safeguarding or other matters.

Staff are encouraged to set an 'Out of Office' and to not access emails outside of their working hours.

Restrictions are set on who can send whole staff Trust and school emails.

Data collections are kept to a maximum of three data drops per year group in any one given academic year. Meeting time is allocated so staff can accurately analyse and discuss.

Student assessments are strategically planned for the academic year to allow time for effective marking and feedback.

Responsive teaching and live feedback are utilised to provide guided instruction and identify common misconceptions so that gaps are quickly closed.

Schools do not roll over the timetable during the second half of the Summer Term, this time is used to work on core priorities and vital staff training.

Duties, including detentions, are shared equally amongst staff.

Meetings start and finish on time with well-structured agenda and, staff should not feel pressured to stay late.

PPA will be distributed throughout the working week to allow time for colleagues to plan and prepare throughout.

CPD Matters

Department time is prioritised and focuses upon sharing expertise, distributing workload and enhancing knowledge.

Inset and twilights are strategically mapped to the strategic objectives of the school and the professional development needs of staff.

The Performance Development Reviews focus upon how staff feel about their current role, how they would like their role to evolve, their career aspirations and any CPD needs that they have.

All staff are given equal access to the Trust ROUTES CPD programme and coaching and mentoring provision. Staff are supported to undertake this during the school day.

Department development time during the last term of the year to support strategic planning and development for the year ahead.

CPD time for strategies to manage workload and how to manage what we expect from ourselves.



Communication Matters

Weekly staff bulletins for key messages to decrease the amount of email traffic from different personnel.

Briefings focus on training staff and sharing key/important messages.

Consultative Forums for staff to raise issues/ or concerns; especially where any significant change is planned.

Capture staff voice on workload.

Regular meetings with Union representatives to ensure that all is well across the school.

Meet the needs of family life, ensuring emotional and family wellbeing is supported.

Trust Wellbeing Ambassadors in every school/team who champion all workforce developments.

Wellbeing Committees within each school/ team encourage to monitor and discuss workload issues.



Continuous Professional Development (CPD)

The professional development of staff, including opportunities for research, is a key priority of the Trust. As such, we seek to enrich employee capability and maximise the strength and contribution of everyone who works with us. We believe in investing in the learning and development of its employees through a range of opportunities which are aligned to the needs of the organisation and its young people.

Access to our internal ROUTES CPD programme, Minerva Leaders of Education Coaching Programme, leadership training, coaching, mentoring, external CPD programmes, ECT training, ITT development, apprenticeships, networking opportunities and access to external courses are just a taster of the wide range of opportunities on offer to all our staff. Our strong collaborative community networks for Headteachers, senior leaders, subjects leaders and variety of support staff roles support the culture of collaborative generosity and sharing of good practice across our organisation.

As a Trust we strongly believe in the power of growing our own leaders and the importance of succession planning and talent management. Many leaders within our organisation have been developed through this route.

This is underpinned by our new approach to Performance Development Reviews, rather than Performance Management, which supports a move away from performance related pay to one which focuses upon the personal and professional developments needs of all individuals to ensure the best possible outcomes for all our young people.

Occupational Health Support and Counselling

The Trust accesses Occupational Health services via Indus Occupational Health and Counselling services via Collins Donnelly Consultancy and Zurich Municipal. A range of services can be provided. Further information can be made available upon request.

DSE Eye Tests

Staff who work with Display Screen Equipment (DSE) continuously and intensively for more than one hour per day on most days as a significant part of their normal day to day work can access pre-paid eye examination vouchers, which they can use at Specsavers. Staff should speak to Central HR or the school Business Support Manager to access a voucher.

Pension Schemes

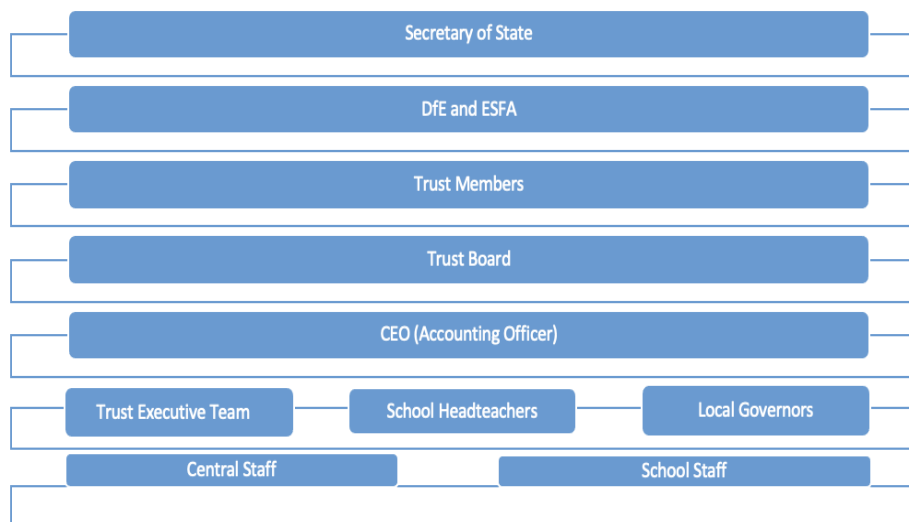
All employees of the Trust are automatically enrolled into either the Teachers' Pension Scheme or the Local Government Pensions Scheme (LGPS). Further information and terms and conditions can be found on their websites.

Salary Sacrifices Schemes

Employees of the Trust can access the Government's Cycle to Work Scheme, which offers the opportunity to buy cycles and cycling equipment. Further information can be made available upon request.

Section 5: Governance and Leadership Structure

The diagram below illustrates lines of accountability within all Multi Academy Trusts:



Members

Minerva Learning Trust has four Members. Members are from a range of professional backgrounds including education, finance and legal services.

The Members have a role akin to shareholders. Founding Members are signatories to the Articles of association. They have the power to amend the Trust's Articles, receive the annual accounts and appoint Trustees.

The Members meet twice yearly, including the Annual General Meeting. Details of the Trust's Members can be found on the Trust's website www.minervalearningtrust.co.uk

Minerva Learning Trust - Members

Kabier Aslam	John Bowers	David Burkinshaw	Sam Twiselton
--------------	-------------	------------------	---------------

Trustees/Directors

The Trust is overseen by a Board of Trustees, currently consisting of eight. Trustees are responsible for governing and exercising all of the powers of the Trust, including:

- Ensuring clarity of vision, values and strategic direction.
- Holding the Chief Executive Officer to account for educational performance of the Trust's academies.

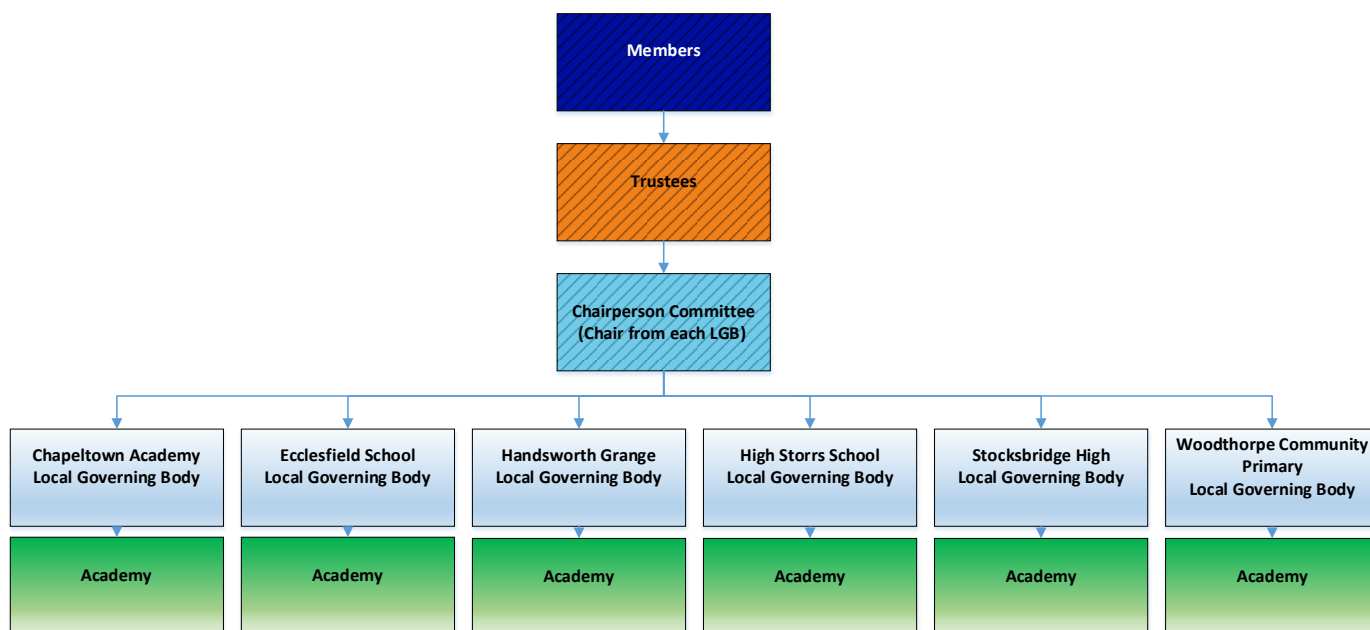
- Overseeing the financial performance of the Trust, managing risks and ensuring legal compliance.

The Board of Trustees meet on a termly basis. The Trust also has an Audit and Risk Committee that meets on a termly basis. Details of individual Trustees can be found on the Trust's website.

Minerva Learning Trust - Trustees

Ed Wydenbach (Chair)	Jonathan Crossley-Holland (Vice Chair)	Pepe Di'Iasio	John Doyle Risk and Audit Committee
Genny Bradley	Nicholas Wood	Roger Salt Risk and Audit Committee (Chair)	

The Trust's governance structure is depicted in the following diagram.



Section 6: Job Description



Minerva Learning Trust Job Description

Minerva Learning Trust is committed to safeguarding and promoting the welfare of children and young people and expects all staff and volunteers to share this commitment.

POST TITLE	Finance Officer
GRADE/SALARY	Grade 7 Point 27 – 31 (£33,820 - £37,261) – Pay award pending
HOURS/WEEKS	37 Hours x 52 Weeks
LOCATION	Trust Central Office
RESPONSIBLE TO	Finance Business Partner
PURPOSE OF THE JOB	To ensure the accuracy and sound control of financial transactions in line with Trust finance policy
RELEVANT QUALIFICATIONS	Accounting qualification (e.g. AAT and working towards ACCA/CIPFA and CIMA) and proven technical financial accounting experience to achieve the level of skills, knowledge and understanding required to fulfil the requirements of the role.

SPECIFIC DUTIES AND RESPONSIBILITIES

The post-holder, must at all times, carry out his/her duties and responsibilities within the spirit of Minerva Learning Trust and School policies and within the legislative framework applicable to academies.

MAIN DUTIES

Key Responsibilities

- To work closely with the Finance Business Partner to ensure internal controls meet the requirements of Trust policy, QA framework and statutory requirements. the.
- To perform month end procedures including complex accounting journals for all trust establishments promptly and accurately to meet the Trust obligations to the Academy Trust Handbook and other statutory requirements.

- To undertake other reconciliations as required to ensure the Trust is compliant with the Academy Trust Handbook.
- To undertake financial reporting for the Trust in line with Trust policy and procedure to assist the Finance and Operation Assistants workload if required.
- To contribute to the reporting of income and expenditure to the trust.
- Budget monitoring and reforecasting for allocated schools.
- Complete payroll reconciliation processes and ensure budgets are updated accordingly.
- Ensure compliance to HMRC requirements.

Financial management and reporting

- Complete month end processes using advanced specialist technical accounting knowledge to ensure transactions are recorded accurately and in line with the Academy Trust Handbook.
- Produce management accounts for allocated schools.
- Ensure that orders are accurately and promptly processed, and any associated goods received notes are filed and assigned to the relevant record in the accounting system by the Finance and Operations Assistant.
- Ensure invoices due for payment are processed in line with policy by the Finance and Operations Assistant.
- Respond to all financial queries and provide guidance on Trust Policy to Schools as well as accounting regulations.
- Maintain financial records in line with the Trust financial policy and procedures.
- Reconcile VAT submissions and reimbursements.
- Reconcile receipts and payments on the central bank account.
- Complete financial tasks as directed.

Budget monitoring and forecasting

- Manage allocated School's budget and monitor budgets to be able to complete reforecasting.
- Give guidance to schools with budget queries
- Maintain comprehensive grant spend trackers to ensure reporting within the grant terms and conditions.

Other

- Allocate work to the Finance and Operations Assistant and assist with complex accounting queries.
- Support new schools joining the trust with system implementation, training and understanding of Trust policy.
- Contribute to the development of financial systems.

SAFEGUARDING

- To be aware of and work in accordance with the school's child protection policies and procedures in order to safeguard and promote the welfare of children and young people and to raise any concerns relating to such procedures which may be noted during the course of duty.

OTHER SPECIFIC DUTIES

- To play a full part in the life of the Trust community, to support its mission and ethos and to encourage staff and students to follow this example.
- To actively promote the Trust's policies.
- To be courteous and provide a welcoming environment.

GENERAL

1. To be aware of, and comply with, Trust and school policies and procedures relating to child protection, health, safety and security, confidentiality and data protection, reporting all concerns to an appropriate person.
2. The above duties are not exhaustive and the post-holder may be required to undertake tasks, roles and responsibilities as may be reasonably assigned to them by the Chief Executive, Trust HR and Governance Director or Chief Finance and Operations Officer.
3. This job description will be kept under review and may be amended via consultation with the individual, Trust HR and Governance Director and Executive Team as required. Trade Union representatives will be welcome in any such discussions.

Section 7: Person specification



Minerva Learning Trust

Person Specification

Post title: Finance Officer

Minimum Essential Requirements	Method of Assessment
QUALIFICATIONS AND TRAINING	
Accounting Qualification relevant to the role or proven financial reporting and accounting work experience to support the level of skills, knowledge and understanding required to fulfil the requirements of the role	AF/I
KNOWLEDGE AND EXPERIENCE	
Experience in financial reporting and complex accounting principals	AF/I
Experience of finance systems	AF/I
Experience of financial management and processes	AF/I
Have a good understanding of current financial rules and regulations	AF/I
Experience of supporting and assisting work to others	AF/I
PROFESSIONAL DEVELOPMENT	
Evidence of a commitment to Continuous Professional Development	AF/I
Willingness to actively participate in professional learning	AF/I
SKILLS	
Excellent interpersonal skills	AF/I
Ability to work under pressure and meet deadlines	AF/I/AA
Perform duties with accuracy and attention to detail	AF/I/AA
The ability to motivate others	AF/I
QUALITIES AND ATTRIBUTES	
High expectations of self	AF/I
Demonstrate a positive team approach to work	AF/I
Energy and commitment to professional responsibilities	AF/I
EQUAL OPPORTUNITIES AND SAFEGUARDING	
An understanding of safeguarding issues and promoting the welfare of children and young people.	AF/I
A commitment to safeguarding students.	AF/I
Suitability to work with children.	AF/I
A commitment to equal opportunities.	AF/I
Ability to recognise discrimination and willingness to put Equality Policies into practice.	AF/I

Key:

AF = Application form
I = Interview
R = Reference

Section 8: The Appointment Process

These notes are intended to guide you when making an application.

1. The Application Form
Complete the application form neatly, fully and accurately, including exact dates. The form may be typed or handwritten but if you do write it by hand please make sure that it is legible and that you use black ink. Indicate clearly on the front page the post you are applying for. You are requested to submit a concise application.
2. Education and Training
State your qualifications and any training you have undertaken relevant to the post.
3. Present Appointment
Make it clear what your present post is, which establishment you work in and who your employer is.
4. Previous Appointment
When completing this section, it is important that you offer a continuous record, or an explanation of any gaps to allow full account to be taken of your experience, for example, child raising, voluntary work. This is a requirement under our recruitment and safeguarding policies.
5. Referees
Suitable referees are people who have direct, recent experience of your work and who are in responsible positions. We may need to contact them at short notice so please be specific with regard to contact addresses including e-mail and telephone numbers.
6. The Supporting Statement/Letter of Application
The supporting statement or letter is regarded as a very important part of your application. You should make statements that demonstrate how your qualifications and experience match the post. You should take particular care to demonstrate how you meet the person specification included as part of these details.
Please limit your supporting statement to two sides of A4 in size 11 font.
7. Arrangements for Interview
Shortlisted applicants will be contacted as soon as possible after the closing date. Referees are contacted prior to the interview stage for teaching and some support staff posts. We would ask that all shortlisted applicants read the safeguarding information on the school website prior to attending the interview.
8. The Interview
Candidates will be invited to the Trust Central Office or one of our schools for interview. Where necessary, interviews will be facilitated via an on-line means through Microsoft Teams or Zoom.
9. Feedback
Verbal feedback is offered to those candidates who are shortlisted and not recommended for appointment. It is hoped that this information will help you with future applications.
10. Selection for Appointment
Selection is made conditional upon the successful candidate meeting the Trust's requirements for health, physical capacity and conduct.
11. Arrangements for Applications
When you have completed your application, the completed form and covering letter should be emailed to recruitment@minervalearningtrust.co.uk by the closing date and time.