



Sheffield Local Plan

Transport Assessment: Interim Report on the Strategic Modelling Results

September 2023

SYSTRA



TRANSPORT ASSESSMENT: INTERIM REPORT ON THE STRATEGIC MODELLING RESULTS

IDENTIFICATION TABLE	
Client/Project owner	Sheffield City Council
Project	Sheffield Local Plan
Study	Transport and Analysis Support
Type of document	Report
Date	27/09/2023
File name	Transport Assessment: Interim Report on the Strategic Modelling Results _v4.docx
Number of pages	72

APPROVAL					
Version	Name		Position	Date	Modifications
1	Authors	Alison Daniels Mark Seddon		23/12/2022	Initial Results
	Checked by	Stephen Heritage	Associate Director	23/12/2022	
	Approved by	Nick Benbow	Director	23/12/2022	
2	Author	Alison Daniels Mark Seddon		01/06/2023	Results of model re-runs following updated development data
	Checked by	Stephen Heritage	Associate Director	28/06/2023	
	Approved by	Nick Benbow	Director	28/06/2023	
3	Author	Alison Daniels Mark Seddon		23/08/2023	SCC comments on v2 addressed
	Checked by	Huw Williams	Associate Director	23/08/2023	
	Approved by	Nick Benbow	Director	23/08/2023	
4	Author	Alison Daniels Mark Seddon		05/10/2023	SCC comments on v3 addressed
	Checked by	Huw Williams	Associate Director	05/10/2023	
	Approved by	Nick Benbow	Director	05/10/2023	

TABLE OF CONTENTS

1.	EXECUTIVE SUMMARY	6
1.1	CONTEXT	6
1.2	LOCAL PLAN ASSUMPTIONS	7
1.3	IMPACTS ON THE LOCAL ROAD NETWORK (LRN)	8
1.4	IMPACTS ON THE STRATEGIC ROAD NETWORK (SRN)	9
1.5	PUBLIC TRANSPORT AND ACTIVE TRAVEL	9
1.6	NEXT STEPS	10
2.	INTRODUCTION	12
2.1	BACKGROUND	12
2.2	CONSULTATION	13
2.3	PURPOSE OF THIS REPORT AND OTHER RELEVANT REPORTS	13
3.	TECHNICAL APPROACH	15
3.1	SCRTM1 MODEL	15
3.2	FORECASTING APPROACH	18
3.3	VARIABLE DEMAND MODEL (VDM) RUNS	19
3.4	MODELLING CONTEXT	19
3.5	FURTHER DETAILED ANALYSIS OF LOCAL AREAS	20
4.	MODEL INPUTS – DEMAND SIDE	22
4.1	REFERENCE SCENARIO ASSUMPTIONS	22
4.2	LOCAL PLAN SITES	24
4.3	LAND USE CLASSES	24
4.4	DEVELOPMENT TRIP GENERATION	25
4.5	FREIGHT	26
4.6	DEVELOPMENT TRIP DISTRIBUTION	27
5.	MODEL INPUTS – SUPPLY SIDE	28
5.1	REFERENCE SCENARIO ASSUMPTIONS	28
5.2	LOCAL PLAN SITES AND THE LOCAL HIGHWAY NETWORK	30
6.	PRELIMINARY IDENTIFIED IMPACTS – LOCAL ROAD NETWORK	35
6.1	IMPACT MEASUREMENT	35
6.2	IDENTIFIED LRN IMPACTS	36

6.3	LRN – SUMMARY OF IMPACTS	39
7.	PRELIMINARY IDENTIFIED IMPACTS – STRATEGIC ROAD NETWORK	43
7.1	IMPACT MEASUREMENT	43
7.2	IDENTIFIED SRN IMPACTS	44
7.3	SRN – SUMMARY OF IMPACTS	55
8.	PUBLIC TRANSPORT AND ACTIVE TRAVEL IMPACTS	58
8.1	IMPACT MEASUREMENT	58
8.2	PUBLIC TRANSPORT IMPACTS	59
8.3	ACTIVE TRAVEL IMPACTS	65
9.	SUMMARY AND CONCLUSIONS	69
9.1	SUMMARY	69
9.2	CONCLUSIONS AND NEXT STEPS	70

LIST OF FIGURES

Figure 1.	All Local Plan Sites	8
Figure 2.	SCRTM1 Fully Modelled Area	16
Figure 3.	All Local Plan Sites	32
Figure 4.	Sheffield City Centre Local Plan Sites	33
Figure 5.	Sheffield Lower Don Valley Local Plan Sites	34
Figure 6.	Forecast Changes in 2029 Traffic Flows due to Local Plan – Morning Peak Hour – Full Network	45
Figure 7.	Forecast Changes in 2029 Traffic Flows due to Local Plan – Evening Peak Hour – Full Network	46
Figure 8.	Forecast Changes in 2029 Traffic Flows due to Local Plan – Morning Peak Hour – M1 J33 - 34	48
Figure 9.	Forecast Changes in 2029 Traffic Flows due to Local Plan – Evening Peak Hour – M1 J33 - 34	49
Figure 10.	Forecast Changes in 2029 Junction VoC due to Local Plan – Morning Peak Hour – SRN	53
Figure 11.	Forecast Changes in 2029 Junction VoC due to Local Plan – Evening Peak Hour – SRN	54
Figure 12.	Forecast Public Transport Demand – 2029 AM Peak – Wide Area	61
Figure 13.	Forecast Public Transport Demand – 2029 AM Peak – Central Area	62
Figure 14.	Forecast Public Transport Demand – 2029 PM Peak – Wide Area	63
Figure 15.	Forecast Public Transport Demand – 2029 PM Peak – Central Area	64
Figure 16.	Forecast Changes in 2029 Active Travel Demand (24 hour, 2-way) due to Local Plan – Wider Area	66
Figure 17.	Forecast Changes in 2029 Active Travel Demand (24 hour, 2-way) due to Local Plan – Central Area	67
Figure 18.	St Mary’s Gate / Moore Street Crossings	68

LIST OF TABLES

Table 1.	TAG Validation Criteria and Guidelines for Highway Models	17
Table 2.	Analytical Tools Utilised for Specific Locations	21
Table 3.	Classification of Future Inputs	23
Table 4.	Local Plan Sites by Land Use Type	24
Table 5.	Discrete Land Use Classes Considered	25
Table 6.	Highway Schemes Included in the Reference Forecasts	28
Table 7.	2029 Link Capacity Analysis for the LRN (A630 Parkway)	38
Table 8.	Areas / Corridors Most Affected by Local Plan Developments	41
Table 9.	City Centre Junctions with Significant Capacity Impacts	42
Table 10.	Extent of SRN Analysis	44
Table 11.	2029 Link Capacity Analysis for the SRN	51
Table 12.	Summary of Forecast Local Plan Impacts on the M1 in 2029	55
Table 13.	Forecast PT Demand Increases Near Supertram Stops (trips per hour)	60

APPENDICES (IN SEPARATE DOCUMENT)

A	Sheffield Local Plan Employment Development Schedule
B	2029 Forecast Model Flows
C	2039 Forecast Model Flows
D	2029 Junction VoC Plots
E	2039 Junction VoC Plots
F	2029 and 2039 Link Capacity Analysis – LRN
G	2029 and 2039 Link Capacity Analysis – SRN
H	2039 Active Forecasts
I	2039 PT Forecasts

1. EXECUTIVE SUMMARY

1.1 Context

- 1.1.1 Sheffield City Council (SCC) wish to update their Local Plan and have commissioned SYSTRA to support them with this task.
- 1.1.2 This is a complex undertaking which comprises a number of work stages. In late 2022 / early 2023, SYSTRA provided strategic transport modelling support to model the anticipated transport implications of the Local Plan developments. More recently, the project has moved into a more detailed analytical phase along with the consideration of potential mitigation measures.
- 1.1.3 SCC have developed a series of Local Plan options corresponding to differing levels of development intensity. The Council's agreed spatial option maximises sites in the urban area, whilst allowing consideration of brownfield sites in the Green Belt that adjoin the existing urban area, striking a balance between provision of new homes and protection of the environment. This work focusses on the preferred spatial option site allocations comprising of 28,067 homes and 1.04 million square metres of employment floorspace¹.
- 1.1.4 This report summarises the preliminary findings of strategic transport model analysis of the transport impacts of the Local Plan Scenario. SYSTRA have produced three other technical reports focusing on public transport, active travel and highway impacts.
- 1.1.5 “Zones of impact” for the Local Plan have been assessed for two forecast years (2029 and 2039) focussing on a comparison with a Reference Case scenario. The majority of the presented results relate to 2029, since this is the year when mitigation requirements are most pressing. The Reference Case scenario includes committed land-use developments and transport schemes, which are independent

¹ Excluding Windfall Sites

of the scheme being tested, with overall demand for travel controlled to national forecasts (from Department for Transport).

- 1.1.6 This assessment is considered to represent a worst case scenario in terms of traffic demand. The strategic modelling does not include the representation of any transport interventions over and above already committed and funded interventions, nor the introduction of the policy proposals and mode shift proposals set out in the Sheffield Transport Strategy (<https://www.sheffield.gov.uk/travel-transport/transport-strategy-plans>). Hence the model tests described in this report are referred to as “Policy Off” tests. As a consequence of this, the strategic modelling does not capture the likely impacts of the land use policies and transport interventions intended to result in reduced trip lengths; nor do they take account of the expected increase in the use of public transport or active modes resulting from improved provision of facilities. This approach represents the most robust level of assessment possible.
- 1.1.7 Stakeholder consultation has been undertaken throughout this work. This process is ongoing, and will ensure a comprehensive transport evidence base. Results presented in this report are preliminary; further inputs and stakeholder sign-offs are required before the work can be finalised.

1.2 Local Plan Assumptions

- 1.2.1 The Local Plan includes developments at approximately 400 sites, ranging from very small sites containing only a few dwellings to large sites with more than 1,000 dwellings or more than 100,000 square metres of employment space. The sites are primarily located in the city centre, in the Lower Don Valley, along the A61/A6102 corridor, and in the suburban areas in the south-east of the city. Figure 1 shows the location of the Local Plan sites.

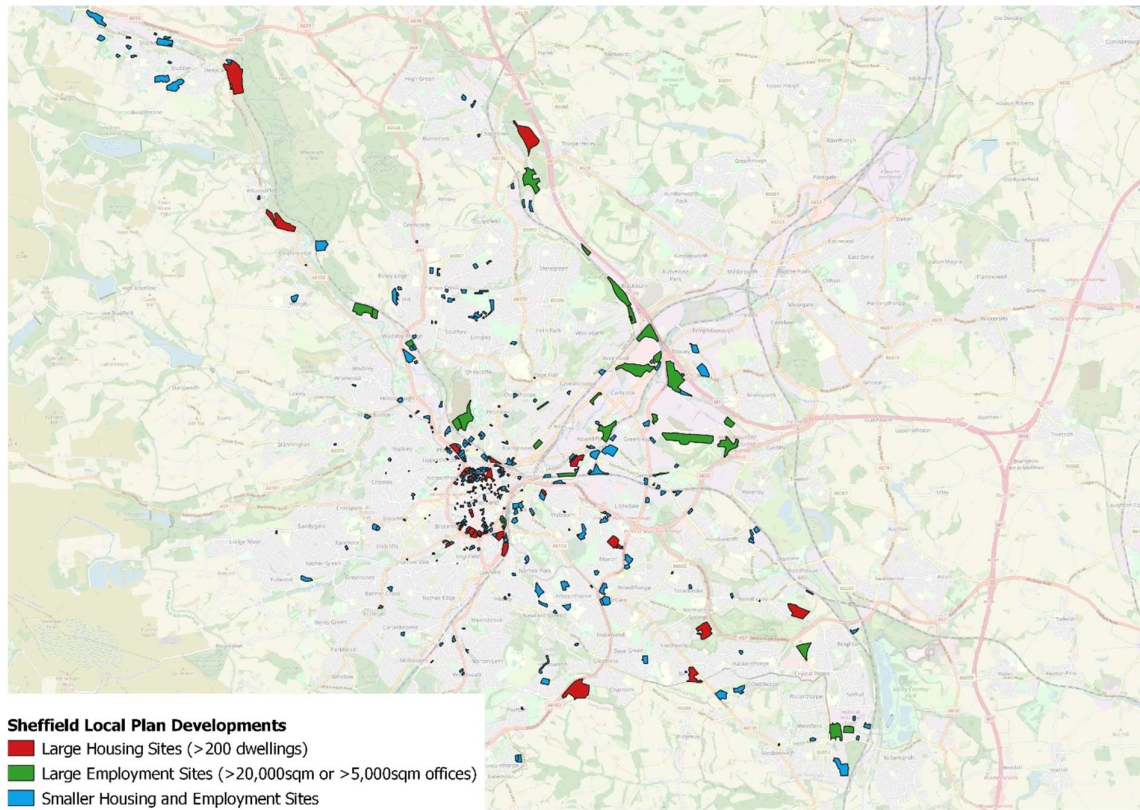


Figure 1. All Local Plan Sites

1.3 Impacts on the Local Road Network (LRN)

1.3.1 It is important to stress that LRN results presented are high-level Local Plan transport impacts as derived from the strategic SCRTM1 model. Description and analysis of more detailed transport impacts as assessed using the Aimsun and local junction modelling tools can be found in the *“Report on Local Road Network Impacts and Preliminary Mitigation”* (September 2023).

1.3.2 The strategic level analysis indicates forecast increases in traffic on highway links which are close to development sites, including those which form strategic clusters, specifically in the following locations:

- Inner Ring Road (see Table 9);
- A630 Sheffield Parkway (flow increase up to 500 vehicles per direction);
- A61 Penistone Road and A6102 Herries Road;
- A6102 Middlewood Road;

- A631 Shepcote Lane and A6178 Sheffield Road– all sections;
- A57 Mosborough Parkway; and
- A6135 City Road and Mansfield Road.

1.3.3 Road junction impacts are mostly forecast along the same key corridors as outlined above. Areas / corridors most notably affected are the Inner Ring Road, and the Lower Don Valley district. The strategic level analysis was used to identify junctions requiring further, more detailed analysis as referenced in paragraph 1.3.1 above.

1.4 Impacts on the Strategic Road Network (SRN)

1.4.1 The same caveat applies to the SRN analysis as to the LRN analysis indicated in paragraph 1.3.1 above. The results presented in this chapter are high-level Local Plan transport impacts as derived from the strategic SCRTM1 model. It is also worth reiterating that these results are preliminary and have not yet been endorsed by NH.

1.4.2 The most noticeable traffic flow increases on the M1, in the range 100 – 300 vehicles per direction in the peak hours, are between J33 and J35. Flow changes on other Strategic Road Network sections are more modest.

1.4.3 Forecast SRN capacity impacts are primarily concentrated on the M1, at Junction 34 South (junctions with A631 and A6178), and Junction 34 North (junctions with A6178 and A6109). This is primarily due to employment sites around the Meadowhall area . These comprise impacts on the mainline carriageway, and the roundabout junctions. Impacts on this SRN section are forecast to be more significant in the evening peak hour.

1.5 Public Transport and Active Travel

1.5.1 Additional travel by public transport (PT) and active modes (walking and cycling) resulting from the Local Plan developments has been quantified and analysed using the strategic model. These demand forecasts are meaningful at the broad level, but less reliable at the local level (eg bus stop) due to model limitations. For this reason, the assessment of public transport and active travel interventions necessary to

support the Local Plan (in a separate report) considers wider policy aims and good practice in addition to modelling outputs.

1.5.2 There is a clear focus of additional public transport demand in the city centre, which is already well served by public transport. Outside of the city centre there is limited additional public transport demand in the vicinity of rail stations. There are several Supertram stops with the potential to attract significant additional ridership, with the largest increase in 2039 being around 450 one-way trips per hour at West Street which is approximately the capacity of 2 tram vehicles.

1.5.3 Active travel demand is forecast to be widely dispersed, albeit with a focus in the city centre. There is a cluster of around 1,200 planned dwellings and 32,000 m² mixed use floorspace south of St Mary's Gate which generates the largest volume of active travel demand. Consideration will be given to enhancing walking and cycling routes between this area and the city centre in our assessment of required interventions.

1.6 Next Steps

1.6.1 Other reports which document particular workstreams in greater detail are available, specifically:

- ***Report on Public Transport and Active Travel Impacts and Potential Mitigation (August 2023)*** – documenting the public transport and active travel demand analysis undertaken using SCRTM1 and preliminary recommendations for mitigation measures.
- ***Report on Strategic Road Network Impacts and Potential Mitigation (August 2023)*** – documenting the SRN road capacity analysis undertaken using a range of modelling tools and techniques along with preliminary recommendations for mitigation measures.
- ***Report on Local Road Network Impacts and Potential Mitigation (August 2023)*** – documenting the LRN road capacity analysis undertaken using a range of

modelling tools and techniques along with preliminary recommendations for mitigation measures.

- 1.6.2 This report and the above more detailed reports are currently being considered by Sheffield City Council, National Highways (NH), neighbouring authorities and other stakeholders. SCC will continue to work with stakeholders to further develop this evidence base to support the Local Plan submission.

2. INTRODUCTION

2.1 Background

- 2.1.1 SYSTRA are supporting Sheffield City Council (SCC) with the development of their Local Plan. This is a complex undertaking which comprises a number of work stages. In late 2022 / early 2023, SYSTRA provided strategic transport modelling support to model the anticipated transport implications of the Local Plan developments. More recently, the project has moved into a more detailed analytical phase along with the consideration of potential mitigation measures.
- 2.1.2 SCC have developed a series of Local Plan options corresponding to differing levels of development intensity. The Council's agreed spatial option maximises sites in the urban area, whilst allowing consideration of brownfield sites in the Green Belt that adjoin the existing urban area, striking a balance between provision of new homes and protection of the environment. This work focusses on the preferred spatial option site allocations comprising of 28,067 homes and 1.04 million square metres of employment floorspace.
- 2.1.3 The work has utilised the Sheffield City Region Transport Model 1 (SCRTM1), which is a strategic transport model designed to estimate the effect of changes in transport infrastructure and travel cost upon patterns of demand.
- 2.1.4 The first phase of the project has focused upon identifying 'zones of impact' using SCRTM1 outputs, i.e. defined sub-areas where the main impacts of each of the strategic sites will be felt. The results presented in this report are preliminary; further inputs and stakeholder sign-offs are required before the work can be considered as a comprehensive transport evidence base. Local plan impacts have been assessed in terms of the following:
- the public transport network, in Sheffield City centre and in the vicinity of significant development sites;
 - the local road network (LRN), in Sheffield City centre and in the vicinity of significant development sites; and

- Strategic Road Network (SRN) within the preliminarily agreed area of influence.

2.2 Consultation

- 2.2.1 Stakeholder consultation has been undertaken throughout this work. This has comprised attendance at regular meetings with Sheffield City Council (SCC), National Highways (NH), and their representatives the Jacobs SYSTRA Joint Venture (JSJV)² to agree on key elements of the proposed approach. The methodology and key assumptions have been agreed with stakeholders as the work progresses.
- 2.2.2 Consultation and discussion has also been undertaken with neighbouring authorities including South Yorkshire Mayoral Combined Authority (SYMCA), Rotherham Metropolitan Borough Council (RMBC), Barnsley Metropolitan Borough Council, Bassetlaw District Council and Bolsover District Council.

2.3 Purpose of this Report and Other Relevant Reports

- 2.3.1 The purpose of this report is to document the strategic modelling work undertaken and the expected city-wide demand changes as a result of the Local Plan. This report should be read in conjunction with other reports documenting particular workstreams in more detail, specifically:

- ***Report on Public Transport and Active Travel Impacts and Preliminary Mitigation (September 2023)*** – documenting the public transport and active travel demand analysis undertaken using SCRTM1 and preliminary recommendations for mitigation measures
- ***Report on Strategic Road Network Impacts and Preliminary Mitigation (September 2023)*** – documenting the SRN road capacity analysis undertaken using a range of modelling tools and techniques along with preliminary recommendations for mitigation measures
- ***Report on Local Road Network Impacts and Preliminary Mitigation (September 2023)*** – documenting the LRN road capacity analysis undertaken using a range of

² Jacobs staff are advising NH in this case to avoid potential or perceived conflicts of interest

modelling tools and techniques along with preliminary recommendations for mitigation measures

2.3.2 The report is structured as follows:

- Chapter 3 – sets out the technical approach
- Chapter 4 – discusses demand-side inputs to the model (*“demand-side” means all aspects that contribute to the projected scale and pattern of transport movements*)
- Chapter 5 - discusses supply-side inputs to the model (*“supply-side” means the physical transport network and services that run on it*)
- Chapter 6 – describes the forecast transport impacts on the local road network (*that is primarily the road network managed by Sheffield City Council*)
- Chapter 7 – describes the forecast transport impacts on the strategic road network (*that is the road network managed by NH, primarily comprising the M1, but also a section of the A616*)
- Chapter 8 - describes the forecast transport impacts in terms of public transport and active travel (*“active travel” means non-motorised movement, primarily walking and cycling*)
- Chapter 9 – provides a concise summary

3. TECHNICAL APPROACH

3.1 SCRTM1 Model

3.1.1 In order to support the development of the Sheffield Local Plan, a multi-modal transport model, called Sheffield City Region Transport Model 1 (SCRTM1), has been used. This model was developed by the South Yorkshire Mayoral Combined Authority (SYMCA). The SCRTM1 variable demand model (VDM) is designed to estimate the effect of changes in transport infrastructure and travel cost upon patterns of demand.

3.1.2 SCRTM1 was specifically developed in order to model and appraise the following schemes in the first instance:

- Mass Transit – replacement of Supertram assets in Sheffield;
- Innovation Corridor (IC) – highway improvements round M1 J33 and J34 to improve access to the Advanced Manufacturing Innovation District; and
- Pan Northern Corridor – Potential highway scheme to improve connectivity between the M1 in the Barnsley Area and the M18/M180 junction.
- HS2 impacts – the impact of the HS2 station in Sheffield city centre on the local transport network
- The Sheffield Clean Air Zone – scheme to provide improved air quality in urban areas of Sheffield
- Doncaster Local Plan – and associated transport schemes

3.1.3 The model has also been used to assess public transport and highway schemes across the Sheffield City Region.

3.1.4 SCRTM1 comprises a transport variable demand model (VDM) and highway and public transport supply models, with a base year representation of travel of 2016. An explanation of the VDM process is provided later in this chapter. The development of the base year transport model is documented in a series of other reports:

- Sheffield City Region Transport Model – Highway Model Local Model Development and Validation Report (AECOM January 2019);

- Sheffield City Region Transport Model – Public Transport Model Validation Report (SYSTRA January 2019);
- Sheffield City Region Transport Model – Demand Model Report (SYSTRA January 2019);

3.1.5 SCRTM1 focuses on trips with an origin, destination, or route passing through the Sheffield City Region. The extent of the Fully Modelled Area is displayed below in Figure 2, with the remaining areas classified as External.

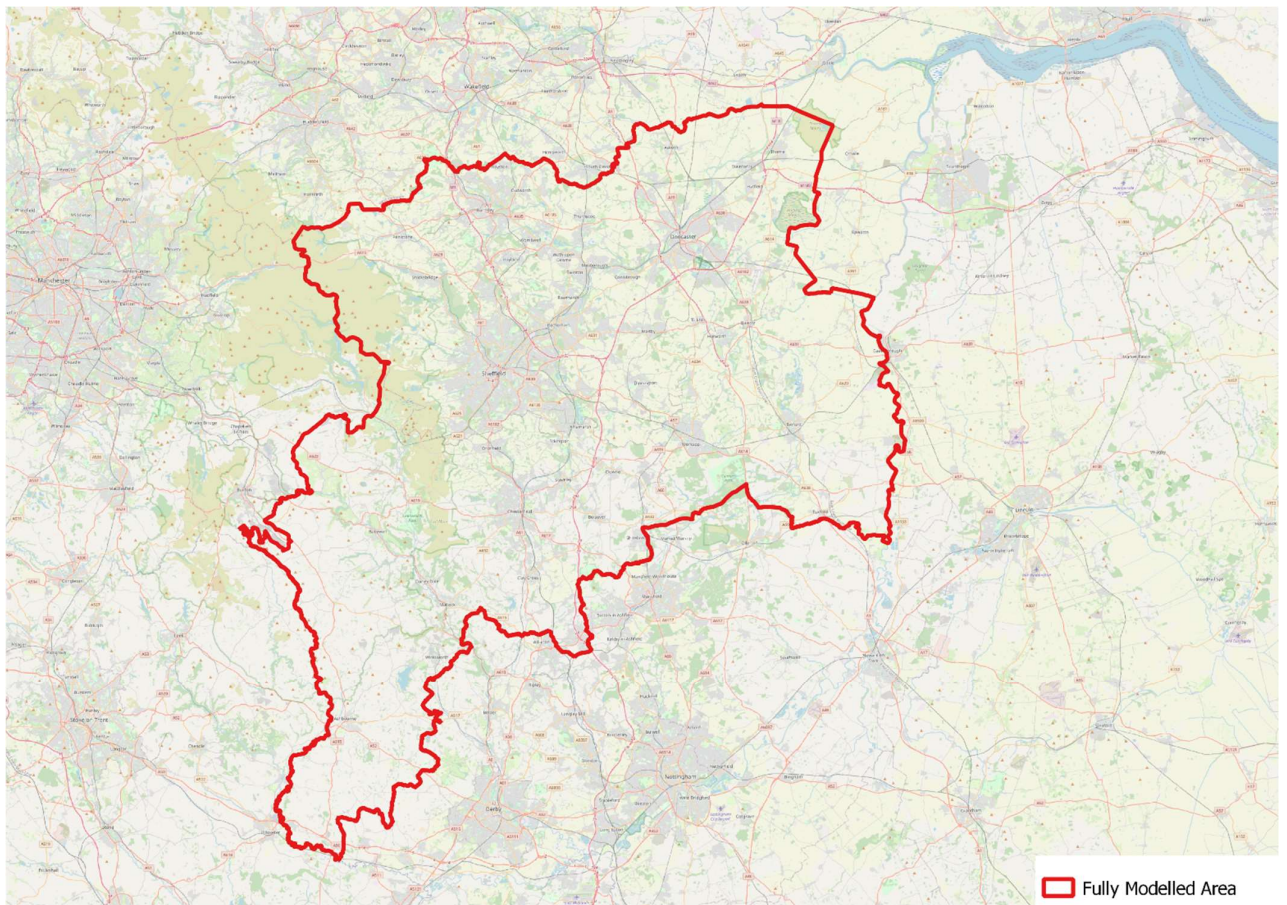


Figure 2. SCRTM1 Fully Modelled Area

3.1.6 The Fully Modelled Area is larger than the SYMCA area, enabling the model to be capable of modelling range of schemes in any part of the region. This also accounts for any schemes that are near to the SCR boundary, and any potential rerouting being accounted for within the Fully Modelled Area, rather than in the External Area

3.1.7 The base year highway model was built in line with the principles set out in DfT Transport Analysis Guidance (TAG). The validation criteria and acceptability guidelines for highway assignment models are set out in Table 1. Specific details of how the SCRTM1 highway model meets these targets can be found in Sheffield City Region Transport Model – Highway Model Local Model Development and Validation Report (AECOM January 2019).

Table 1. TAG Validation Criteria and Guidelines for Highway Models

INDICATOR	CRITERIA	GUIDELINE (TAG)
Screenline Flows	Differences between modelled and observed values should be less than 5% of the counts.	All or nearly all screenlines (i.e. 95%)
Link Flows	Individual flows within 100 veh/h of counts for flows less than 700 veh/h	>85% of cases
	Individual flows within 15% of counts for flows from 700 to 2,700 veh/h	>85% of cases
	Individual flows within 400 veh/h of counts for flows more than 2,700 veh/h	>85% of cases
Link Flows	GEH < 5 for individual flows	>85% of cases
Journey Times	Modelled times along routes should be within 15% of surveyed times (or 1 minute, if higher than 15%)	>85% of routes

3.1.8 The validation of the public transport model was carried out following the guidance given in TAG. A summary of the validation is set out below:

- The network and lines files have been validated to show that they reflect the public transport supply, modelled bus journey times replicated observed times, modelled bus vehicle flows match observed flows and modelled route choice is reasonable.
- Matrix validation checks suggest that demand matrices are of the right order of magnitude.

- Model validation, following matrix estimation, satisfies the criteria for public transport model validation laid out in TAG. Following matrix estimation the model validates well for bus, tram and rail demand. The matrix estimation process resulted in only relatively minor changes to the distribution of demand.

3.2 Forecasting Approach

3.2.1 Our approach to forecasting uses a number of terms that are important for understanding the discussion in this report. These include:

- Model Forecast: A single run of the transport model for a single year;
- Background assumption: An assumed change between base and future year conditions that are assumed to happen independently of the scheme;
- Uncertainty log: This is a record of the assumptions made in the model that will affect travel demand and supply;
- Scenario: A set of forecasts under a single set of assumptions;
- Reference or core forecast: An input to the variable demand model that contains forecasts of demand that are consistent with future year demographic patterns; and
- NTEM: National assumptions about background growth in travel demand, provided by the Department for Transport through the National Trip End Model (NTEM) dataset.

3.2.2 A summary of the VDM process is as follows:

- Future year reference case forecasts are produced by factoring a validated base year model;
- The reference forecast includes the impacts of local land-use developments along with background assumptions that are independent of the scheme being tested, but the overall demand for travel must be controlled to national forecasts of travel demand NTEM;
- The Local Plan forecasts take the reference case forecast as input along with both the background assumptions and the definition of the scheme; and

- The VDM includes sub-models to adjust mode shares and distribution of travel between pairs of model zones as functions of changes in travel time and cost relative to the calibrated base year model.

3.2.3 The model is constrained to NTEM forecasts at the land use level in terms of growth in absolute number of households and jobs. This is achieved by considering the new households and employment opportunities from new developments separately as identified in the Uncertainty Log and then factoring the base year households and employment such that when added to the development changes it matches the NTEM forecast for population and employment growth numbers at a district level. This controlling factor is applied to the base household and employment figures only so that all developments in the uncertainty log (of the appropriate uncertainty level) are included in full.

3.3 Variable Demand Model (VDM) Runs

3.3.1 SCC has assessed the following scenarios using the VDM:

- Reference Case scenario 2029 and 2039 – with no local plan developments
- With Local Plan 2029 and 2039.

3.4 Modelling Context

3.4.1 The future year Reference Scenario forecasts do not include the representation of any transport interventions over and above already committed and funded interventions, nor the introduction of the policy proposals and mode shift proposals set out in the Sheffield Transport Strategy (<https://www.sheffield.gov.uk/travel-transport/transport-strategy-plans>). Hence the model tests described in this report are referred to as “Policy Off” tests. As a consequence of this, the strategic modelling does not capture the likely impacts of the land use policies and transport interventions intended to result in reduced trip lengths, as trips increasingly redistribute to local neighbourhood destinations. Nor do they take account of the expected increase in the use of public transport or active modes resulting from improved provision of facilities.

3.5 Further Detailed Analysis of Local Areas

3.5.1 The results from SCRTM1 will provide valuable insights into the wider multi-modal impacts of the Local Plan development sites across Sheffield and neighbouring regions. However, strategic transport models such as SCRTM1, do have their limitations in terms of assessing detailed impacts on the road network. Further detailed analysis of specific areas has been undertaken using the Aimsun microsimulation models held by SCC³, in conjunction with local junction models and other tools as appropriate. This work is documented in the relevant reports described in Section 2.3. The spatial extent of the usage of these tools is summarised in Table 2.

³ Fore and Arup consultants have been separately commissioned to undertake Aimsun modelling work for the Sheffield Local Plan. This work is being overseen by SYSTRA.

Table 2. Analytical Tools Utilised for Specific Locations

ANALYTICAL TOOLS	ROAD JUNCTION / SECTION / AREA
Aimsun Models	<ul style="list-style-type: none"> • M1 J34 (S), J34 (N) • Lower Don Valley • City Centre
Local Junction Models & Other Tools	<ul style="list-style-type: none"> • M1 J30, J31, J32, J33, J35, J35A, J36 • A616 from M1 J35A west to junction with A628 • Local Road Network outside city centre and Lower Don Valley

4. MODEL INPUTS – DEMAND SIDE

4.1 Reference Scenario Assumptions

Local Planning Data

4.1.1 Planning data was collected at an individual site level across the nine local authorities that form the Sheffield City Region. In most cases this is a comprehensive list of all the significant developments that are being considered as part of the Local Plans in each authority. Basic information for each site was also collected. This included:

- Site location;
- Development type;
- Size of development;
- Expected phasing of development;
- Level of uncertainty – see below; and
- Details of any existing uses on the site that would cease as a result of the development.

4.1.2 DfT Transport Analysis Guidance (TAG) requires that the proposed developments in the area of the scheme are categorised into their probability of occurring. Only those defined as 'near certain' or 'more than likely' may be included in the Core Scenario. Table 3 summarises the categories of probability defined in TAG.

Table 3. Classification of Future Inputs

PROBABILITY OF THE INPUT	STATUS	CORE SCENARIO ASSUMPTIONS
Classifications Included in the Core Scenario:		
Near certain: The outcome will happen or there is a high probability that it will happen.	Intent announced by proponent to regulatory agencies. Approved development proposals. Projects under construction.	This should form part of the core scenario.
More than likely: The outcome is likely to happen but there is some uncertainty.	Submission of planning or consent application imminent. Development application within the consent process.	This could form part of the core scenario.
Classifications Not Included in the Core Scenario:		
Reasonably foreseeable: The outcome may happen, but there is significant uncertainty.	Identified within a development plan. Not directly associated with the transport strategy/scheme, but may occur if the strategy/scheme is implemented. Development conditional upon the transport strategy/scheme proceeding. Or, a committed policy goal, subject to tests (e.g. of deliverability) whose outcomes are subject to significant uncertainty.	These should be excluded from the core scenario but may form part of the alternative scenarios.
Hypothetical: There is considerable uncertainty whether the outcome will ever happen.	Conjecture based upon currently available information. Discussed on a conceptual basis. One of a number of possible inputs in an initial consultation process. Or, a policy aspiration.	These should be excluded from the core scenario but may form part of the alternative scenarios.

4.1.3 The level of uncertainty for each development was agreed with the planning officers in the local authority. This identifies the sites that are most likely to be developed but

does not indicate when the site is likely to be developed. The level of uncertainty assigned to each site will determine whether or not it is included in the forecast.

4.1.4 Sites are selected for inclusion in the forecast scenario based on the appropriate level of site uncertainty being met. For example, it has been decided that, compliant with guidance, the Reference Scenario will include developments that are classed as “More Than Likely” and “Near Certain” but exclude those classed as “Reasonably Foreseeable” or “Hypothetical”. Any Sheffield Local Plan development sites were removed from the Reference Case, to ensure no sites were counted twice.

4.2 Local Plan Sites

4.2.1 In total, there are approximately 400 Local Plan sites. Table 4 provides a breakdown of these by land use type. Many of the sites contain a mixture of land use types, which is why the total numbers of sites by type in this table do not simply sum to 400 sites. As can be seen, the majority of the sites comprise housing uses.

Table 4. Local Plan Sites by Land Use Type

LAND USE TYPE	NUMBER OF LOCAL PLAN SITES INCLUDING THIS LAND USE TYPE	% OF TOTAL SITES INCLUDING THIS LAND USE TYPE
Housing	334	84%
Employment	89	22%
<i>Office</i>	24	6%
<i>Industrial</i>	53	13%
<i>Warehousing</i>	43	11%
<i>Retail</i>	16	4%
<i>Hotels</i>	2	1%
<i>Leisure</i>	3	1%

4.3 Land Use Classes

4.3.1 Table 5 provides a breakdown of the land use classes considered disaggregated by spatial area.

Table 5. Discrete Land Use Classes Considered

LAND USE TYPE	USE CLASS (WHERE APPLICABLE)	SPATIAL AREA
Housing	C3	City Centre
Housing	C3	Non City Centre
Retail Employment	E	City Centre
Retail Employment	E	Suburbs
Retail Employment	E	Outer
Office	E	City Centre
Office	E	Suburbs
Office	E	Outer
Industrial	B2	Suburbs
Industrial	B2	Outer
Warehousing	B8	Suburbs
Warehousing	B8	Outer
<i>Hotels</i>	C1	Suburbs
<i>Leisure</i>	E, F2	Suburbs

4.4 Development Trip Generation

4.4.1 SCRTM1 uses CTripEnd (the DfT tool for the National Trip End Model - NTEM) for trip generation. The process of trip generation takes user inputs to define the number of households and commercial gross floor area for developments sites, and then converts these to population and jobs by applying factors derived from the FLUTE land use model. Trip generation is undertaken by applying trip rates derived from the National Travel Survey to the zonal population and jobs data.

4.4.2 NTEM trip rates are very disaggregate⁴, with:

- 18 journey purposes
- 6 times of day/days of week
- 6 modes
- 8 area types
- 11 traveller types (adult/children/retired, gender, employment/students)
- 8 household car ownership/competition categories (no. adults & no. cars)

4.4.3 As the work progressed, it became clear that SCRTM1 was producing lower estimates of trip generation for individual Local Plan sites than might normally be expected. Following discussions with key stakeholders, SYSTRA undertook a comparative analysis to understand the differences between the NTEM-based forecasts and those that might be expected using the Trip Rate Information Computer System (TRICS).

4.4.4 The outcome of the aforementioned comparative analysis was the proposed application of adjustment factors to all Local Plan sites (as illustrated in the earlier Table 4, this will cover the majority of the Local Plan sites). The approach involved applying the factors to the development site quantum, before these were input to the CTripEnd process. Factors **were not** defined by time period or mode, so mode shares and time of day splits were inferred from the calibrated base year models.) Furthermore, there has been no factoring of demand from other zones (ie. those in the Reference Scenario).

4.5 Freight

4.5.1 Freight trips are generated by applying freight trip rates (separately for LGV and HGV) to the number of jobs in each employment category for each model zone. Freight trips are then factored in the SCRTM1 growth process so that the forecast growth is in line with DfT's Road Traffic Forecasts.

⁴ For details see:

https://assets.publishing.service.gov.uk/government/uploads/system/uploads/attachment_data/file/939095/tag-supplementary-ntem-sub-models.pdf

4.6 Development Trip Distribution

4.6.1 The SCRTM1 approach to trip distribution can be summarised as follows:

- allocate developments to zones;
- forecast trip ends come from trip generation step (CTripEnd);
- apply a Furness algorithm, which applies changes to the base year matrix so that the total number of trips going to and from each model zone match the target forecast trip ends, without changing the base year distribution, i.e. forecast distributions reflect the base year distribution; and
- modifying distribution patterns within the VDM as a function of changes in travel time and cost relative to the calibrated base year model.

5. MODEL INPUTS – SUPPLY SIDE

5.1 Reference Scenario Assumptions

Changes to Highway Network

5.1.1 The SCRTM1 has a base year of 2016. Since 2016, a number of new roads and junctions have been constructed and others upgraded or altered. There are also proposals for other transport schemes to be delivered over the next few years. Table 6 details the schemes that have been added to the SCRTM1 model.

Table 6. Highway Schemes Included in the Reference Forecasts

REF	AUTHORITY	SCHEME DESCRIPTION	OPENING YEAR	CERTAINTY LEVEL
B002	Barnsley	M1 Junction 36 - A6195 Dearne Valley Economic Growth Corridor (Phase 2 - Improvements to key junctions and creation of 2 new development accesses).	2019/20	More Than Likely
B004	Barnsley	M1 Junction 37, phase 1 (Dodworth road Crossroads)	2020	More Than Likely
B018	Barnsley	Darton Lane/Sackup Lane roundabout (Planning app now submitted)	2019	More Than Likely
R020	Rotherham	M1 J33/A630 Parkway	2021	More Than Likely
R021	Rotherham	M1 J33/A630 Parkway	2021	More Than Likely
R033	Rotherham	Signalise A631 Bawtry Road/B6060 Morthen Road roundabout (Mason's), Wickersley	2021	More Than Likely
S010-S012	Sheffield	A61 Chesterfield Road	2019	Near Certain
S026	Sheffield	North Sheffield Key Bus Route (BBA)	Completed	Completed
S033	Sheffield	Gleadless Key Bus Route	Completed	Completed

REF	AUTHORITY	SCHEME DESCRIPTION	OPENING YEAR	CERTAINTY LEVEL
S041	Sheffield	City Centre	2019	Near Certain
S043	Sheffield	City Centre	2019	Near Certain
S056	Sheffield	IRR / Castlegate	2019	More Than Likely
S080	Sheffield	ORR / Graves Centre	Completed	Completed
S107	Sheffield	SCRIF Bridgehouses	2020	More Than Likely
S108	Sheffield	IKEA junction improvements between A6178 / A6102 and Tinsley Roundabout, plus Meadowhall Roundabout.	Completed	Completed
DO1	Doncaster	FARRRS Phase 2, Great Yorkshire Way connection to Hayfield Lane	2018	Completed
DO3	Doncaster	Hatfield Link Road, Connection with J5 of M18 with Stainforth/Hatfield unlocking 3,100 houses and employment sites	2020	Near Certain
DO8	Doncaster	Quality Streets, Road closures and 1 way street changes to Town Centre	2019	On site
DO9	Doncaster	Trafford Way Station Improvements, Lane alterations and access to Doncaster Railway Station	2020	Near Certain
AMRC	Rotherham	AMRC	2019	More Than Likely

Changes to Public Transport Supply

5.1.2 In the reference case forecast, it has been assumed that the Supertram service will continue, with a frequency of 7.5 trams per hour. Park and ride sites are included at Magna and Rotherham Parkgate, and bus services are updated to reflect the changes

introduced by the Housing Zone North development, and by the Cross City Bus scheme.

5.2 Local Plan Sites and the Local Highway Network

- 5.2.1 Sheffield City Council's Planning team have provided SYSTRA with a list of Local Plan development sites. Figure 3 shows the locations of all development sites and Figure 4 and Figure 5 show the sites in and around Sheffield city centre. The sites are primarily located on the fringes of the city centre, in the Lower Don Valley, along the A61/A6102 corridor and in the suburban areas in the south of the city.
- 5.2.2 In total, information has been provided for 400 sites, ranging from very small sites containing only a few dwellings to large sites with more than 1,000 dwellings or more than 100,000 square metres of employment space. By necessity given the programme constraints, SYSTRA has focused its efforts on the larger of these sites when checking how the access and egress arrangements are represented in the models.
- 5.2.3 The detailed assessment work to date has not directly assessed potential windfall sites. Due to their nature, it is unclear where, when and what quantum of development is likely to come forward, in particular later in the Local Plan period. Traffic modelling requires clear definition on the likely quantum, location and phasing of development, and future growth impacts. A considerable amount of work has been undertaken to establish the most likely development scenarios with regards to housing and employment trajectories over the Local Plan period. As and when windfall sites come forward, they should be assessed using the most appropriate methodology. This should be underpinned by a robust Transport Assessment / Statement and Travel Plan, considering the full effects of the Local Plan as required. At this stage, and based on the location-specific information currently available, the modelling work is considered to be robust, forecasting the impacts irrespective of any assumptions about the extensive opportunities for active travel and public transport improvements (i.e. traffic flows have not been adjusted to reflect the potential mode shift potential on key corridors across the study area).

5.2.4 The following checks have been carried out for employment sites larger than 20,000sqm, or office sites larger than 5,000sqm (17 sites, 68% of employment floorspace), which are shown in green in the following figures, and for the housing sites with more than 200 units (32 sites, 47% of dwellings), which are shown in red:

- Checked the site locations, and made sure the highway model includes sufficient level of detail in the surrounding road network, updating the network as needed;
- Checked the speeds, junction types, junction layouts, and capacities of the highway model for all major junctions near the schemes, and made updates to the highway network as needed;
- Recorded the level of model validation achieved in the vicinity (using the published validation reports) to assist with interpretation of modelling results, but without refining the validation;
- Where available, used plans from Sheffield City Council's planning team, to inform vehicular access arrangements, signal timings and staging, planned public transport enhancements, pedestrian and active travel improvements, and added these details to the models; and
- If no plans were available, made credible assumptions about which junction the development would use to access the road network.

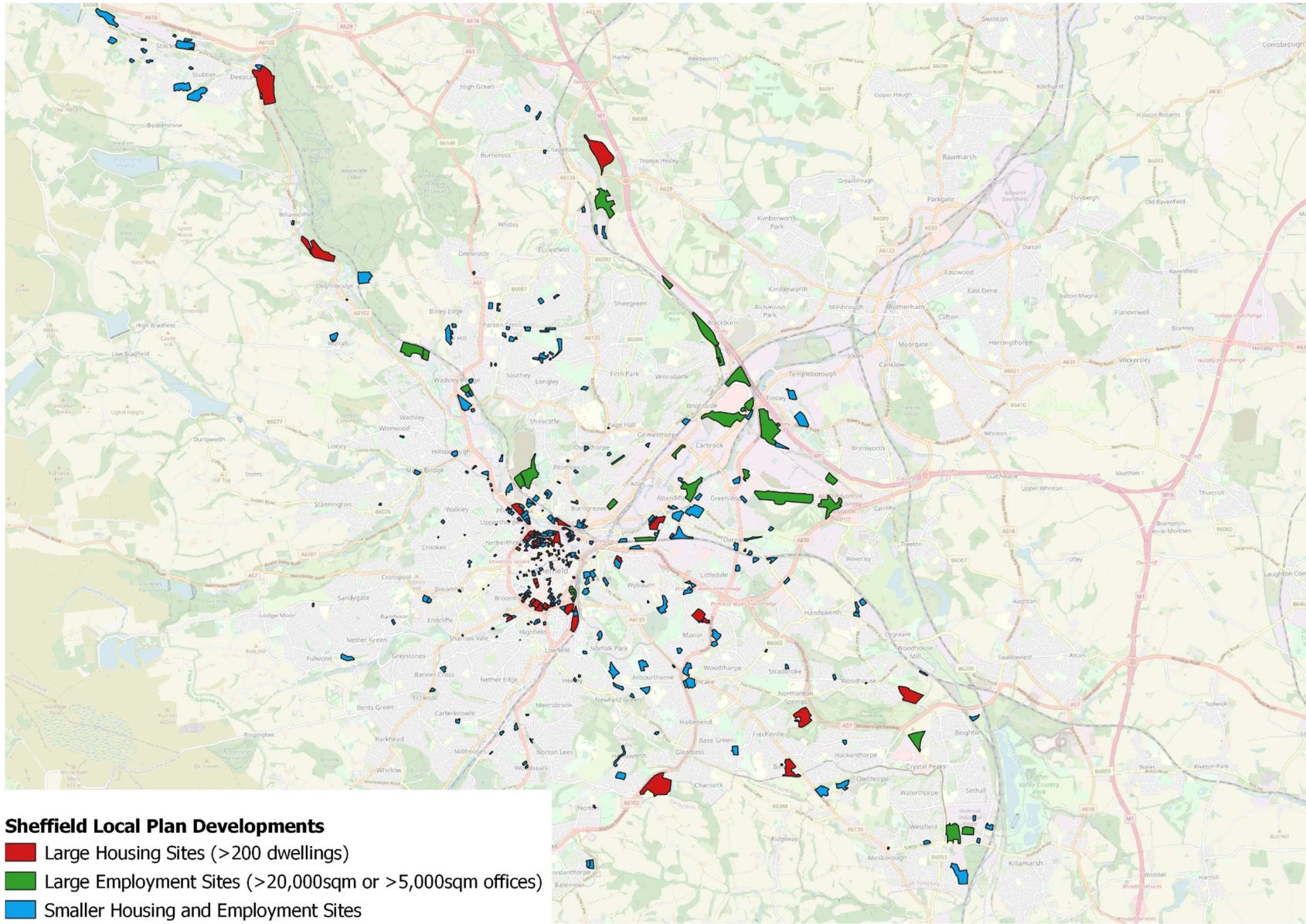


Figure 3. All Local Plan Sites

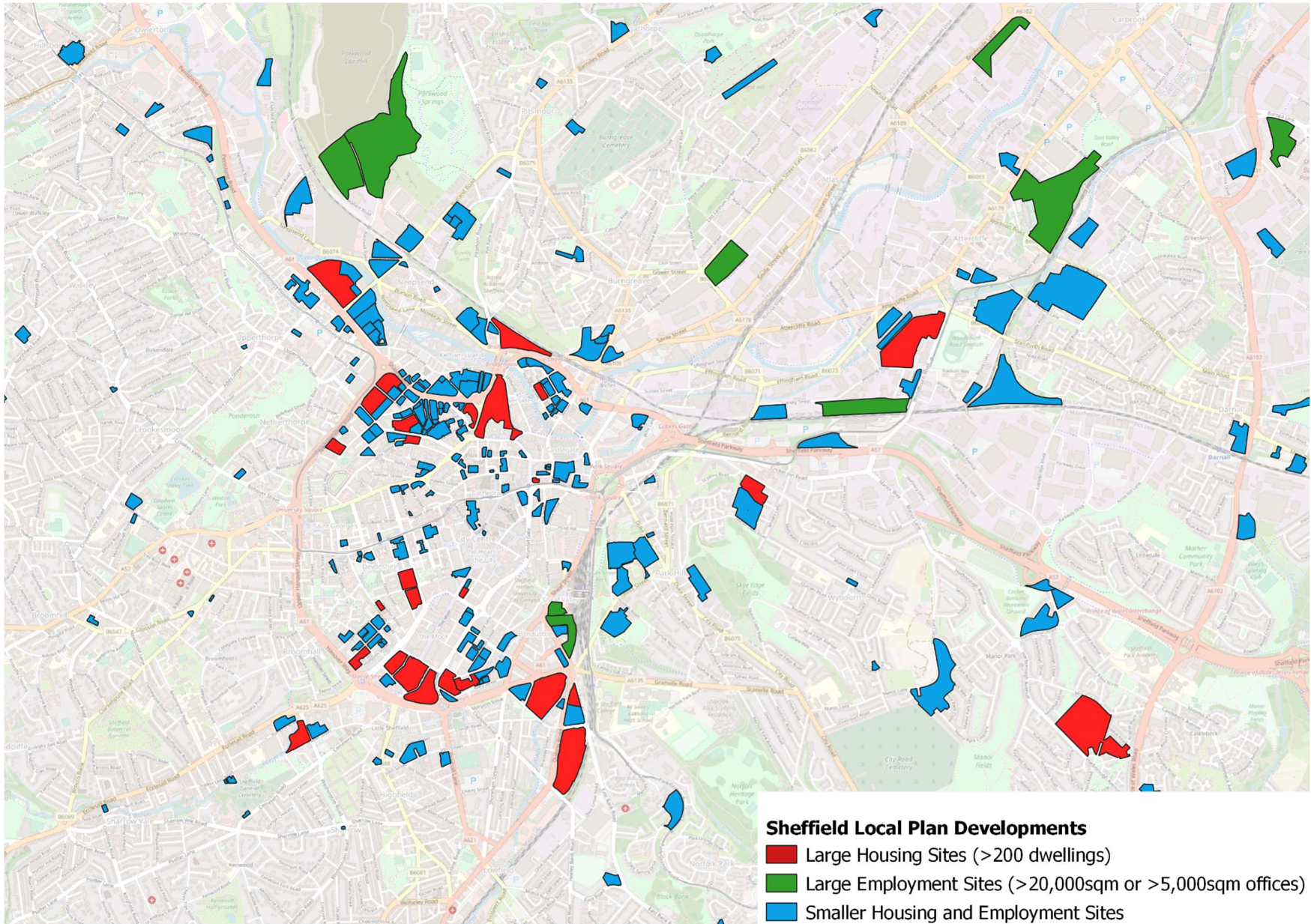


Figure 4. Sheffield City Centre Local Plan Sites

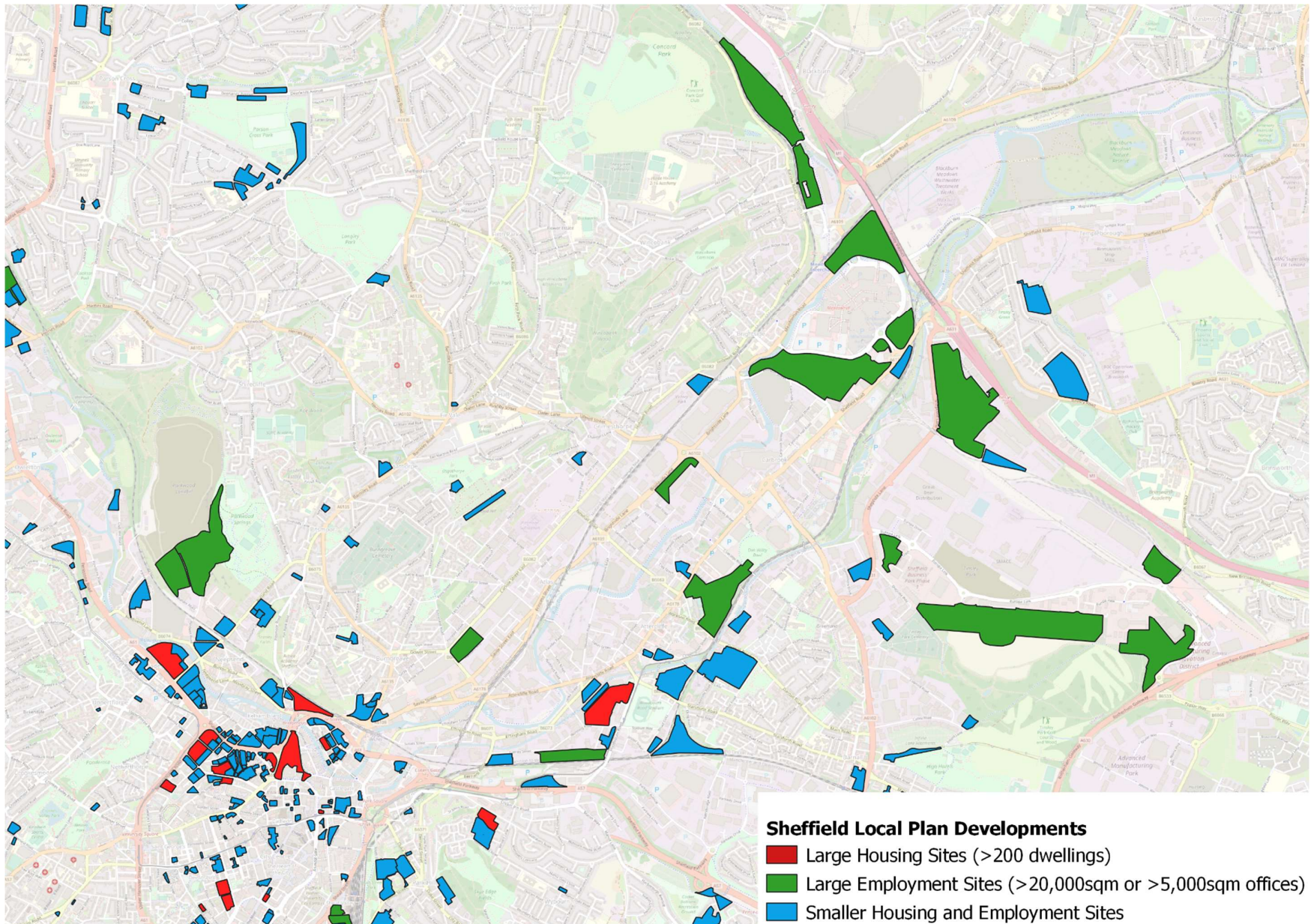


Figure 5. Sheffield Lower Don Valley Local Plan Sites

6. PRELIMINARY IDENTIFIED IMPACTS – LOCAL ROAD NETWORK

6.1 Impact Measurement

- 6.1.1 Road network impacts are measured in terms of capacity impacts on road links and road junctions. When considering urban road networks, link capacity is generally only considered to be a meaningful indicator for dual carriageway / grade separated roads. Other road links – ie. two-way single carriageway roads – are primarily constrained by junction capacity rather than link capacity. Morning and evening peak hours are considered since this is when impacts are most likely to occur. Road network impacts are considered in relative terms (ie. relative to the respective future year Reference scenario) rather than in absolute terms.
- 6.1.2 The remainder of this chapter sets out forecast road network impacts of the Local Plan Scenario on the local road network (LRN) as follows:
- Forecast peak hour traffic flow change
 - Road link capacity
 - Road junction capacity
- 6.1.3 **It is important to stress that the results presented in this chapter are high-level Local Plan transport impacts as derived from the strategic SCRTM1 model. Description and analysis of more detailed transport impacts as assessed using the Aimsun and local junction modelling tools can be found in the “*Report on Local Road Network Impacts and Preliminary Mitigation*” (June 2023).**
- 6.1.4 The analysis of the impacts in the following chapters is focused on 2029, as this is the modelled year closest to the likely scheme opening dates, with some commentary also provided on 2039 results. Full results for both 2029 and 2039 can be found in Appendices B to G.

6.2 Identified LRN Impacts

Forecast Model Flows

6.2.1 Appendix B presents the forecast peak hour link flow changes between the reference case and the Local Plan Scenarios, for the morning peak and evening peak hours in 2029. Plots for 2039 are presented in Appendix C.

6.2.2 The flow changes are shown in passenger car units (PCUs) per hour (pcus/hr) and are shown via various shades of red depending on the intensity of the flow change. The darker the colour, the higher the flow change.

6.2.3 The plots are presented for the following key areas of Sheffield:

- the full network, covering the extent of all local plan development sites;
- Sheffield City Centre;
- Lower Don Valley Corridor;
- Penistone Road Corridor;
- South East Sheffield Corridor; and
- South West Bus Corridors (Ecclesall Road and Abbeydale Road)

6.2.4 The scale of flow change that would be considered to constitute a problematic impacts would depend on the specific location and circumstances. As a very rough guide, a flow increase of more than 100 pcu/hour could be considered significant although less so on high capacity roads such as motorways and dual carriageways. Flow increases of this scale resulting from the Local Plan Scenario, in 2029, are forecast at multiple LRN locations. Some significant locations are listed below:

- Inner Ring Road – all sections;
- A630 Parkway – all sections;
- A61 Penistone Road and A6102 Herries Road;
- A6102 Middlewood Road;
- A631 Shepcote Lane and A6178 Sheffield Road– all sections; and
- A57 Mosborough Parkway.

6.2.5 In 2039, the flow increases can be seen in the same locations, but generally to a larger extent as the forecast flows are higher. In addition to the above locations, significant increases in flows can be seen on:

- A6135 City Road and Mansfield Road

Highway Flows and Capacity

6.2.6 Analysis of traffic flows and capacities was undertaken for all dual carriageway / grade-separated roads beyond the Strategic Road Network (SRN). Appendix F presents the following for each of these roads:

- Assumed Link Capacity.
- Observed Base Year Flows.
- Base Year, 2029 and 2039 Reference Case Flows, and 2029 and 2039 Local Plan Scenario Flows in vehicles / hour.
- Flow Differences between the Reference Case and the Local Plan Models.
- Calculated Volume Over Capacity Ratios – this is a ratio which gives a good overall guide to a road's capacity (*VoC ratio is calculated for each turning movement at each junction. It is calculated by dividing the flow arriving at the junction by the road's capacity, separately for each turning movement. When the VoC is 100% the junction is at capacity*).

6.2.7 Of these dual carriageway / grade separated links only the A630 Sheffield Parkway is significantly affected by the local plan traffic in 2029 as shown in Table 7. In the morning peak hour, the VoC ratios increase for most sections of the Parkway, in both directions, but there are no sections where the VoC ratio increases significantly. In the evening peak hour, the VoC ratios increase significantly at the following locations, but still remain under 100%:

- Eastbound between city centre and A6102 junction (VoC increases from 85% to 91%)
- Eastbound between A57 Interchange and Handsworth Interchange (VoC increases from 83% to 89%)

- Eastbound between Europa Link and M1 Junction 33 (VoC increases from 84% to 96%)

Table 7. 2029 Link Capacity Analysis for the LRN (A630 Parkway)

ROUTE	DIRECTION	DESCRIPTION	REF CASE VOC		LOCAL PLAN VOC	
			AM	PM	AM	PM
A630 Parkway	Eastbound	to A6102 junction	57%	85%	67%	91%
A630 Parkway	Westbound	from A6102 junction	94%	80%	92%	86%
A630 Parkway	Eastbound	A57 Int to Handsworth Int	77%	83%	84%	89%
A630 Parkway	Westbound	Handsworth Int to A57 Int	89%	90%	90%	93%
A630 Parkway	Eastbound	Europa Link to M1 j33	86%	84%	90%	96%
A630 Parkway	Westbound	M1 j34 to Europa Link	97%	92%	100%	94%

6.2.8 In 2039, the VoC ratios increase on every section of the Parkway, in both directions and in both time periods. The section most affected is the eastbound section between Europa Link and M1 Junction 33, where in the evening peak hour the VoC increases from 87% to 101%, pushing it over capacity.

Road Junction Capacity

6.2.9 Appendix D presents the forecast peak hour changes in the junction Volume Over Capacity ratio (VoC) between the Reference and the Local Plan Scenarios, for the morning peak and evening peak hours, in 2029. Plots for 2039 are presented in Appendix E. These results were used to identify junctions for further analysis via microsim / local junction modelling tools.

6.2.10 For each junction, we have taken the VoC ratios for all possible turning movements, and compared the highest value between the Reference Case and the With Local Plan Scenarios.

6.2.11 The forecast peak hour change in VoC ratio is defined using a 'Red – Amber – Green (RAG)' rating as follows:

- Red – VoC ratio is over 100%
- Amber – VoC ratio is between 85% and 100%
- Green – VoC ratio is less than 85% (*85% is considered to be a desirable limit for urban junctions*)

6.2.12 The categories shown on the plots are as follows:

- No Change – junctions where the maximum VoC ratio stays green, or where it stays within the amber or red categories and increases by <10%
- Green to Amber - junctions where the maximum VoC ratio increases from below 85% to between 85% and 100%
- Amber to Amber – junctions where the VoC ratio stays between 85% and 100%, and increases by more than 10%
- Amber to Red – junctions where the maximum VoC ratio goes from between 85% and 100%, to >100%
- Red to Red - junctions where the VoC ratio stays above 100%, and increases by more than 10%

6.2.13 The plots are presented for the following key areas of Sheffield:

- the full network, covering the extent of all local plan development sites;
- Sheffield City Centre; and
- Lower Don Valley.

6.2.14 The most significantly impacted junctions, unsurprisingly, are concentrated on those road links forecast to experience the greatest increase in traffic due to the Local Plan, as presented in the above sections; that is, they are concentrated around the Inner Ring Road, A630 Parkway, A61 Penistone Road, A6102 Middlewood Road, A631 Shepcote Lane, and A6135 City Road and Mansfield Road.

6.3 LRN – Summary of Impacts

6.3.1 Analysis of SCRTM1 outputs show that there are forecast increases in traffic on highway links which are close to clusters of development sites. Specifically in the following locations:

- Inner Ring Road (see Table 9 below);
- A630 Sheffield Parkway (flow increase up to 500 vehicles per direction);
- A61 Penistone Road and A6102 Herries Road;
- A6102 Middlewood Road;
- A631 Shepcote Lane and A6178 Sheffield Road– all sections;
- A57 Mosborough Parkway; and
- A6135 City Road and Mansfield Road.

6.3.2 VoC plots show that those junctions most impacted by the Local Plan sites in road capacity terms, are also close to either large, or clusters of development sites. Table 8 shows the key junctions impacted by the local plan developments, together with an estimation of the severity of the impacts along the corridors as a whole. As this section provides an overall summary, analysis has been included for 2039.

Table 8. Areas / Corridors Most Affected by Local Plan Developments

		SEVERITY OF CHANGE IN VOC			
		2029		2039	
AREA	ROAD NAMES	MORNING PEAK	EVENING PEAK	MORNING PEAK	EVENING PEAK
City Centre	A61 Inner Ring Rd (<i>see Table 9</i>)	Moderate	Moderate	Significant	Significant
South West Bus Corridors	A61 London Rd / Abbeydale Rd / Ecclesall Rd	Minimal	Minimal	Minimal	Moderate
Penistone Rd Corridor	Penistone Rd, and junctions with Neepsend Lane and Herries Rd South	Moderate	Moderate	Moderate	Significant
Lower Don Valley	A630 Sheffield Parkway	Moderate	Minimal	Significant	Significant
Lower Don Valley	Attercliffe Road and Saville St / Brightside Lane	Significant	Moderate	Significant	Significant
South East Sheffield	City Road / A6135	Moderate	Minimal	Significant	Moderate

6.3.3 The city centre inner ring road becomes more congested as a result of the local plan traffic, with the largest effects being seen in 2039. Table 9 shows the junctions on the IRR which are significantly impacted (ie. capacity moves above 100%).

Table 9. City Centre Junctions with Significant Capacity Impacts

TIME PERIOD	JUNCTIONS WITH A61 INNER RING ROAD	
	2029	2039
Morning Peak (0800-0900)	Shoreham Street , Bramhall Lane Roundabout, London Road, Penistone Road, Corporation Street, Mowbray Street, Wicker.	Park Square roundabout, Queen’s Road, Shoreham Street, Brook Hill roundabout, Meadow Street, Penistone Road, Corporation Street, Mowbray Street, Wicker.
Evening Peak (1700-1800)	Bramall Lane, London Road, Meadow Street, Corporation Street, Wicker.	Queen’s Road, Bramall Lane, London Road, Ecclesall Road, Broomspring Lane, Glossop Road, Meadow Street, Corporation Street, Wicker.

7. PRELIMINARY IDENTIFIED IMPACTS – STRATEGIC ROAD NETWORK

7.1 Impact Measurement

7.1.1 The strategic road network (SRN) is functionally distinct from the LRN. The SRN is designed to principally carry long distance traffic, although in practice it often serves a secondary function carrying intra-regional traffic. Although most Local Plan generated traffic is expected to remain within the Sheffield city region, some of this traffic will utilise the SRN.

7.1.2 SRN impacts are set out below in terms of motorway and trunk road link capacity and junction capacity. Morning and evening peak hours are considered since this is when impacts are most likely to occur. Road network impacts are considered in relative terms (ie. relative to the respective future year Reference scenario) rather than in absolute terms.

7.1.3 The remainder of this chapter sets out forecast road network impacts of the Local Plan Scenario on the strategic road network (SRN) as follows:

- Forecast peak hour traffic flow change
- Road link capacity
- Road junction capacity

7.1.4 It is important to stress that the results presented in this chapter are high-level Local Plan transport impacts as derived from the strategic SCRTM1 model. Description and analysis of more detailed transport impacts as assessed using the Aimsun, local junction modelling and merge/ diverge analytical tools can be found in the “Report on Strategic Road Network Impacts and Preliminary Mitigation” (September 2023).

7.1.5 Table 10 shows the extent of the SRN considered in this work as agreed with NH.

Table 10. Extent of SRN Analysis

THE	ROAD JUNCTION / SECTION
M1	J30, J31, J32, J33, J34 (S), J34 (N), J35, J35A, J36
A616	From M1 J35A west to junction with A628 (Flouch Roundabout)

7.2 Identified SRN Impacts

Forecast Model Flows

- 7.2.1 Figure 6 and Figure 7 show the forecast peak hour link flow changes between the reference case and the Local Plan Scenario, for the morning peak and evening peak hours in 2029 for the full SRN network. Plots for 2039 are presented in Appendix C.

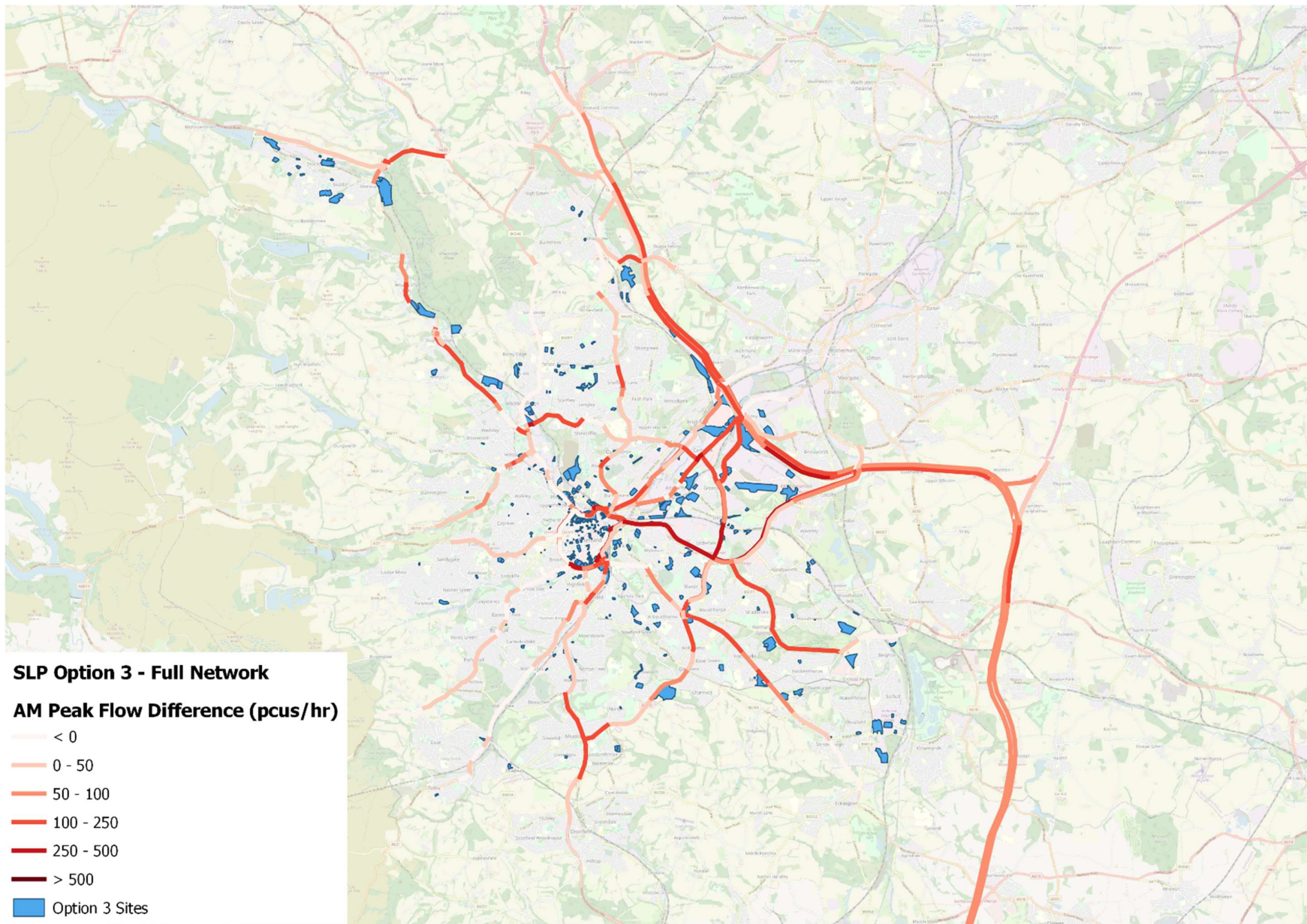


Figure 6. Forecast Changes in 2029 Traffic Flows due to Local Plan – Morning Peak Hour – Full Network

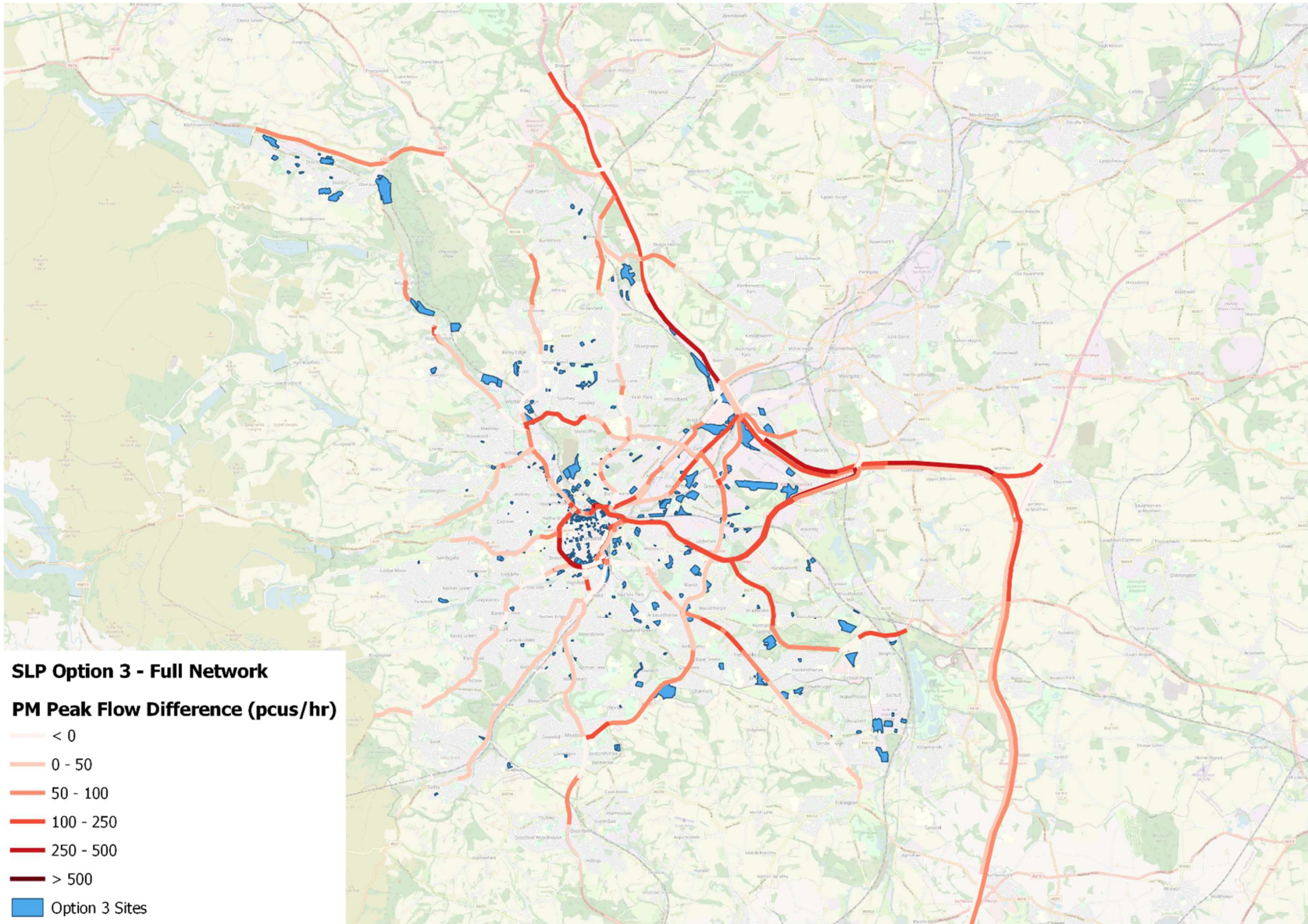


Figure 7. Forecast Changes in 2029 Traffic Flows due to Local Plan – Evening Peak Hour – Full Network

- 7.2.2 When comparing the Reference and the Local Plan Scenario, the most noticeable flow increases are forecast to occur on the section of the M1 between J33 and J35. Flow increases in this vicinity are variable by peak and specific link section, but are generally in the range 100 – 300 vehicles per direction. Flow changes on other SRN sections are more modest.
- 7.2.3 Preliminary analysis suggests that the increases in traffic we see on this section of the SRN are mostly generated by the employment sites around the Meadowhall area of Sheffield. The volume of traffic generated by these sites using the M1 varies by site and peak hour, but generally falls within the range 15% to 40%.
- 7.2.4 The proportion of generated traffic from other Local Plan sites using the M1 is much lower. The city centre Local Plan sites are generally residential flats. Based on the expected residents of such sites, the parking provision and travel characteristics minimal traffic generation on the SRN would be expected.
- 7.2.5 Figure 8 and Figure 9 show the forecast peak hour link flow changes between the reference case and the Local Plan Scenarios for M1 Junction 33 to 34, for the morning peak and evening peak hours in 2029. Plots for 2039 are presented in Appendix C.
- 7.2.6 The flow changes are shown in passenger car units per hour (pcus/hr) and are shown via various shades of red depending on the intensity of the flow change. The darker the colour, the greater the flow change.

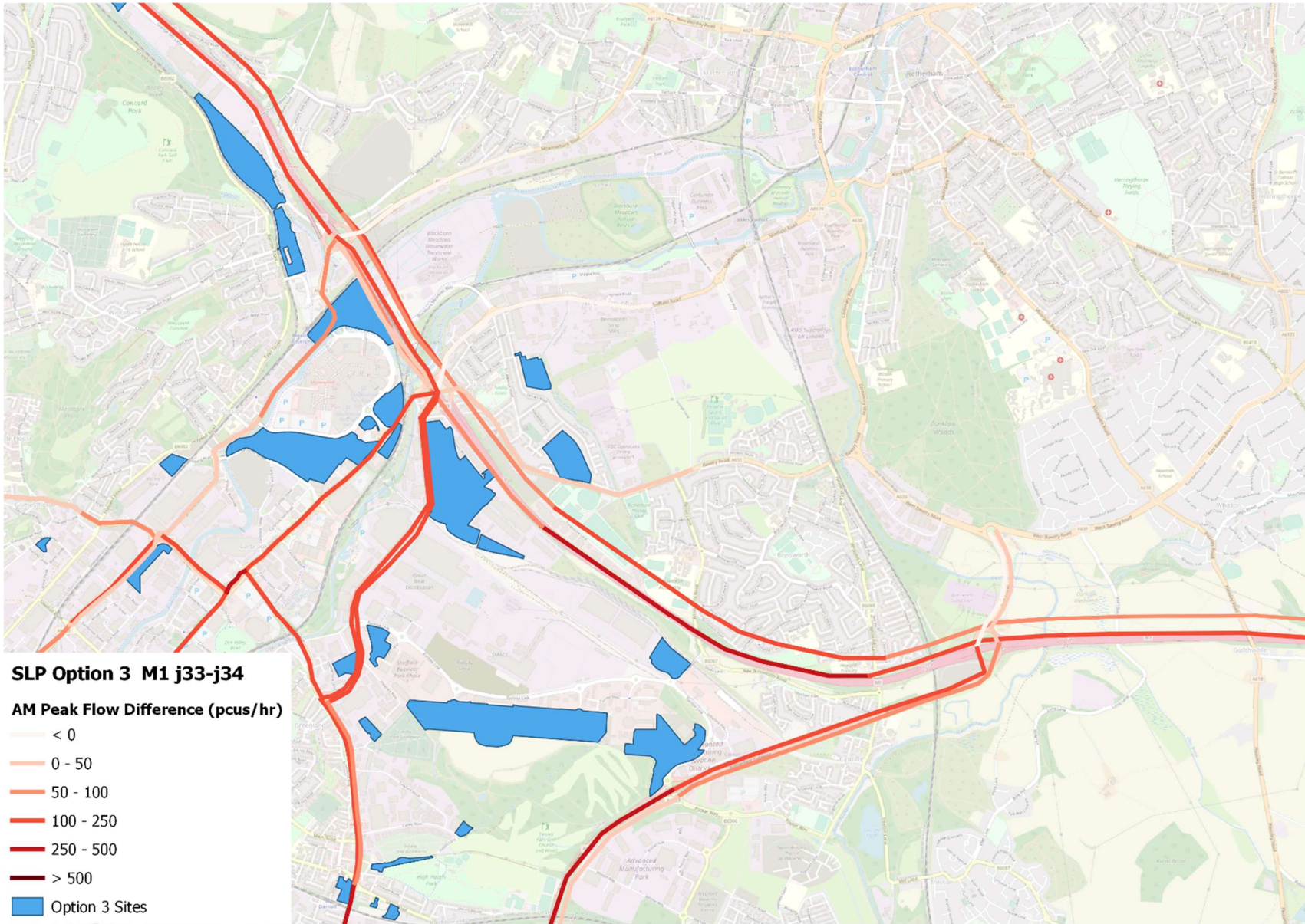


Figure 8. Forecast Changes in 2029 Traffic Flows due to Local Plan – Morning Peak Hour – M1 J33 - 34

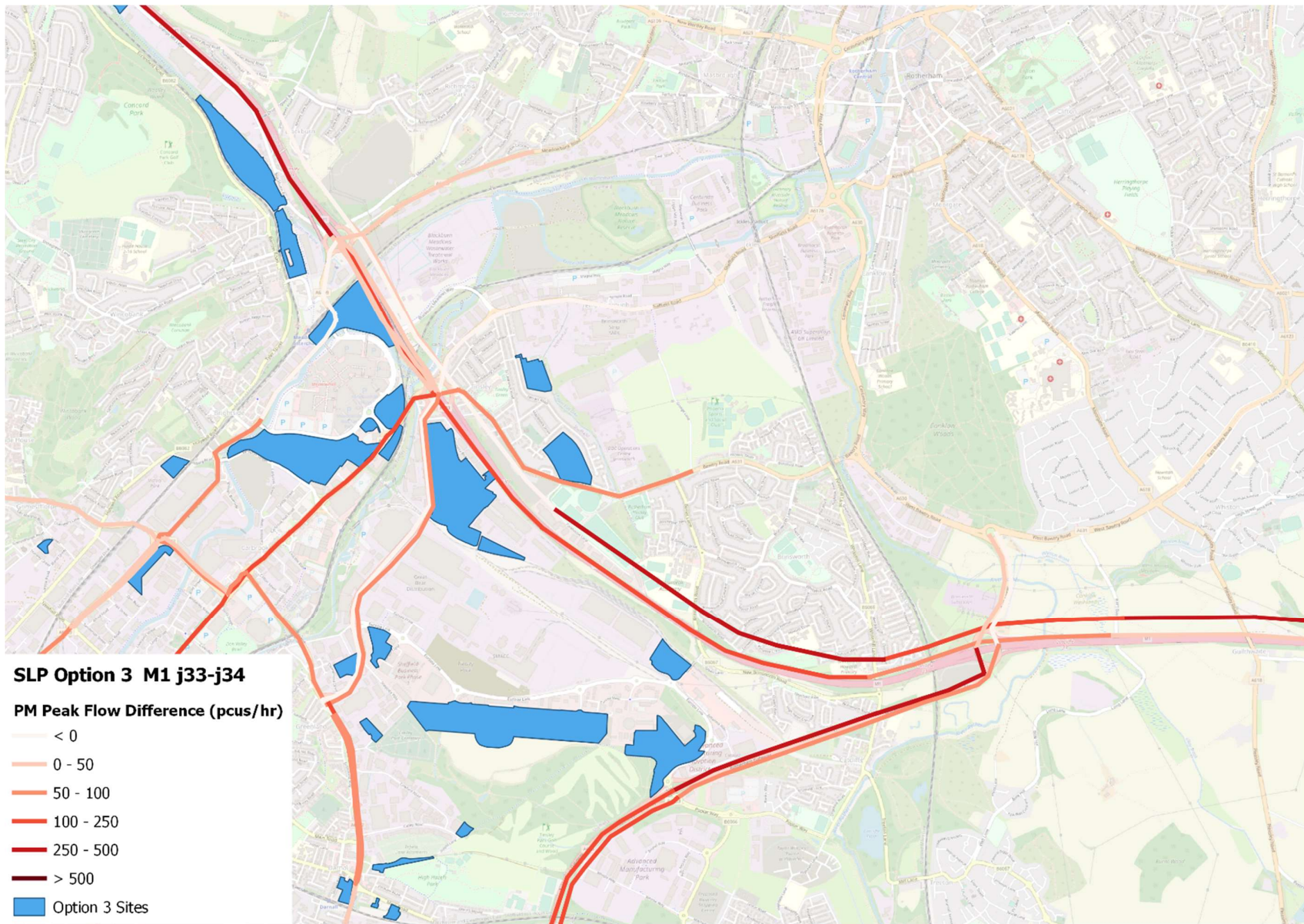


Figure 9. Forecast Changes in 2029 Traffic Flows due to Local Plan – Evening Peak Hour – M1 J33 - 34

SRN Flows and Capacity

7.2.7 Analysis of traffic flows and capacities was undertaken for all Strategic Road Network (SRN) links. Appendix G presents the following for these roads:

- Assumed Link Capacity
- Observed Base Year Flows
- Base Year, 2029 and 2039 Reference Case Flows, and 2029 and 2039 Local Plan Scenario Flows in vehicles / hour
- Flow Differences between the Reference Case and the Local Plan Models
- Calculated Volume Over Capacity Ratios – this is a ratio which gives a good overall guide to a road's capacity (*VoC ratio is calculated for each turning movement at each junction. It is calculated by dividing the flow arriving at the junction by the capacity, separately for each turning movement. When the VoC is 100% the junction is at capacity*).

7.2.8 A summary of the SRN links which are most affected by the local plan traffic in 2029 is shown in Table 11. This table shows links where there is an increase in VoC due to Local Plan traffic, and where the VoC in either peak hour is higher than the 85% desirable threshold.

7.2.9 In most of these cases the increase in VoC due to Local Plan traffic is marginal, being in the range 1-4% points. The links where the change in VoC exceeds this are listed below.

- M1 Junction 34 (South) (On Slip Road: Merge) – evening peak hour;
- M1 Junction 34 (North) (On Slip Road: Merge) – evening peak hour;
- M1 Junction 34 (North) (Off Slip Road: Diverge) – morning peak hour;
- M1 Junction 35A (At Junction) – evening peak hour; and
- M1 Junction 35A - M1 Junction – evening peak hour.

Table 11. 2029 Link Capacity Analysis for the SRN

DIRECTION	DESCRIPTION	REF CASE VOC		LOCAL PLAN VOC	
		AM	PM	AM	PM
Northbound	M1 Junction 31 - M1 Junction 32	87%	86%	88%	87%
Southbound	M1 Junction 32 - M1 Junction 31	79%	91%	80%	93%
Eastbound	M1 Junction 33 - M1 Junction 32	68%	89%	69%	93%
Eastbound	M1 Junction 33 (At Junction)	60%	82%	61%	85%
Southbound	M1 Junction 34 (South) (On Slip Road: Merge)	41%	92%	42%	108%
Northbound	M1 Junction 34 (North) (On Slip Road: Merge)	73%	111%	74%	114%
Southbound	M1 Junction 34 (North) (Off Slip Road: Diverge)	101%	71%	108%	69%
Northbound	M1 Junction 34 (North) - M1 Junction 35	61%	82%	63%	86%
Northbound	M1 Junction 35 - M1 Junction 35A	63%	84%	63%	87%
Northbound	M1 Junction 35A (At Junction)	71%	99%	70%	103%
Northbound	M1 Junction 35A - M1 Junction 36	71%	99%	70%	103%
Northbound	M1 Junction 36 - M1 Junction 37	85%	95%	86%	97%
Southbound	M1 Junction 37 - M1 Junction 36	82%	91%	82%	92%

SRN Junction Capacity

- 7.2.10 Figure 10 and Figure 11 show the forecast peak hour changes in Volume Over Capacity ratio (VoC) between the Reference and the Local Plan Scenarios, for the morning peak and evening peak hours, in 2029. Plots for 2039 are presented in Appendix E.
- 7.2.11 VoC ratio is calculated for each turning movement at each junction. It is calculated by dividing the flow arriving at the junction by the capacity, separately for each turning movement. When the VoC is 100% the junction is at capacity. For each junction, we have taken the VoC ratios for all possible turning movements, and compared the highest value between the Reference Case and the Local Plan Scenarios.
- 7.2.12 The forecast peak hour change in VoC ratio is defined using a 'RAG' rating as follows:
- Red – VoC ratio is over 100%
 - Amber – VoC ratio is between 85% and 100%
 - Green – VoC ratio is less than 85%
- 7.2.13 The categories shown on the plots are as follows:
- No Change – junctions where the maximum VoC ratio stays green, or where it stays within the amber or red categories and increases by <10%
 - Green to Amber - junctions where the maximum VoC ratio increases from below 85% to between 85% and 100%
 - Amber to Amber – junctions where the VoC ratio stays between 85% and 100%, and increases by more than 10%
 - Amber to Red – junctions where the maximum VoC ratio goes from between 85% and 100%, to >100%
 - Red to Red - junctions where the VoC ratio stays above 100%, and increases by more than 10%
- 7.2.14 The most significantly impacted SRN junctions are J34S and J34N on the M1.

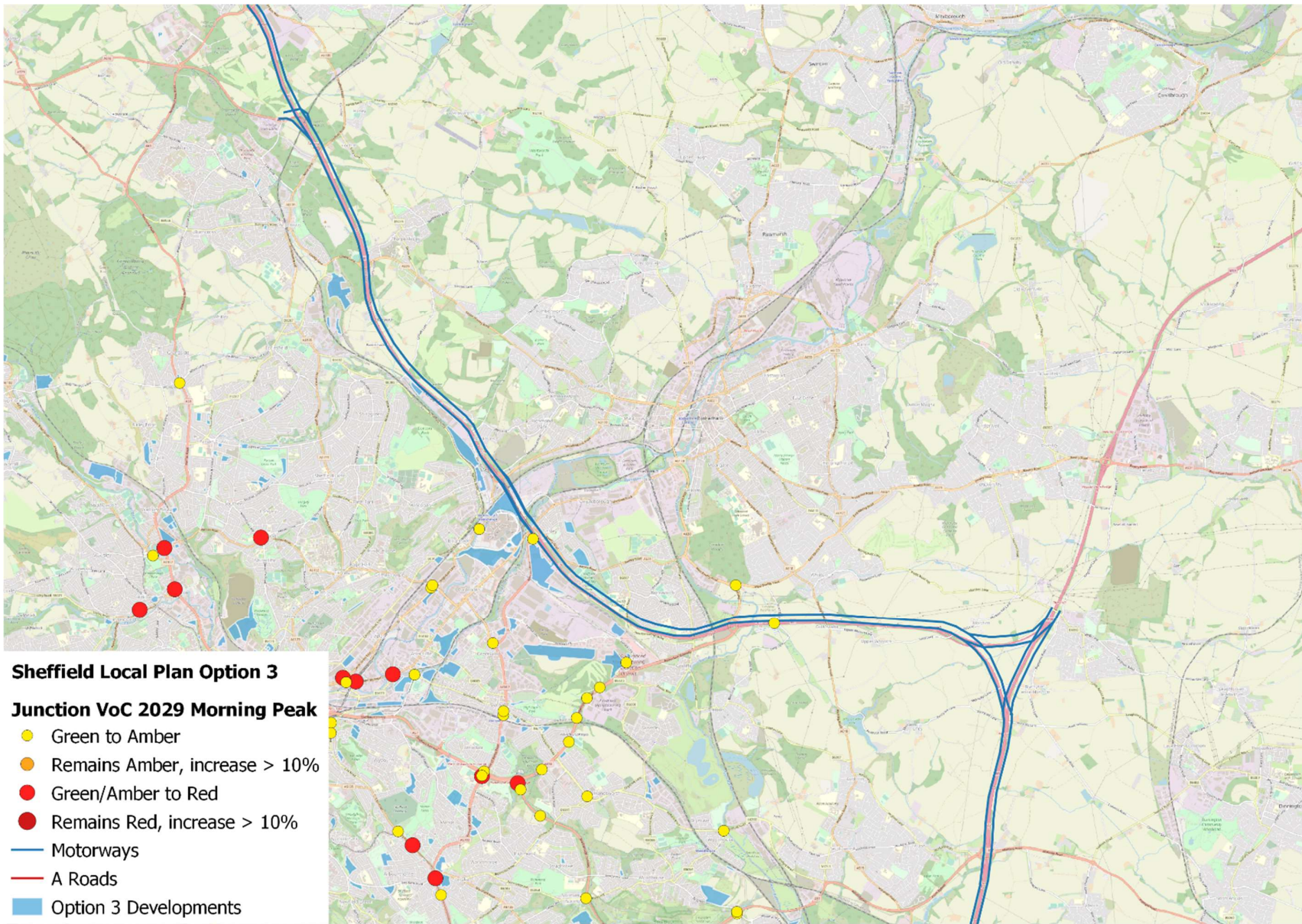


Figure 10. Forecast Changes in 2029 Junction VoC due to Local Plan – Morning Peak Hour – SRN

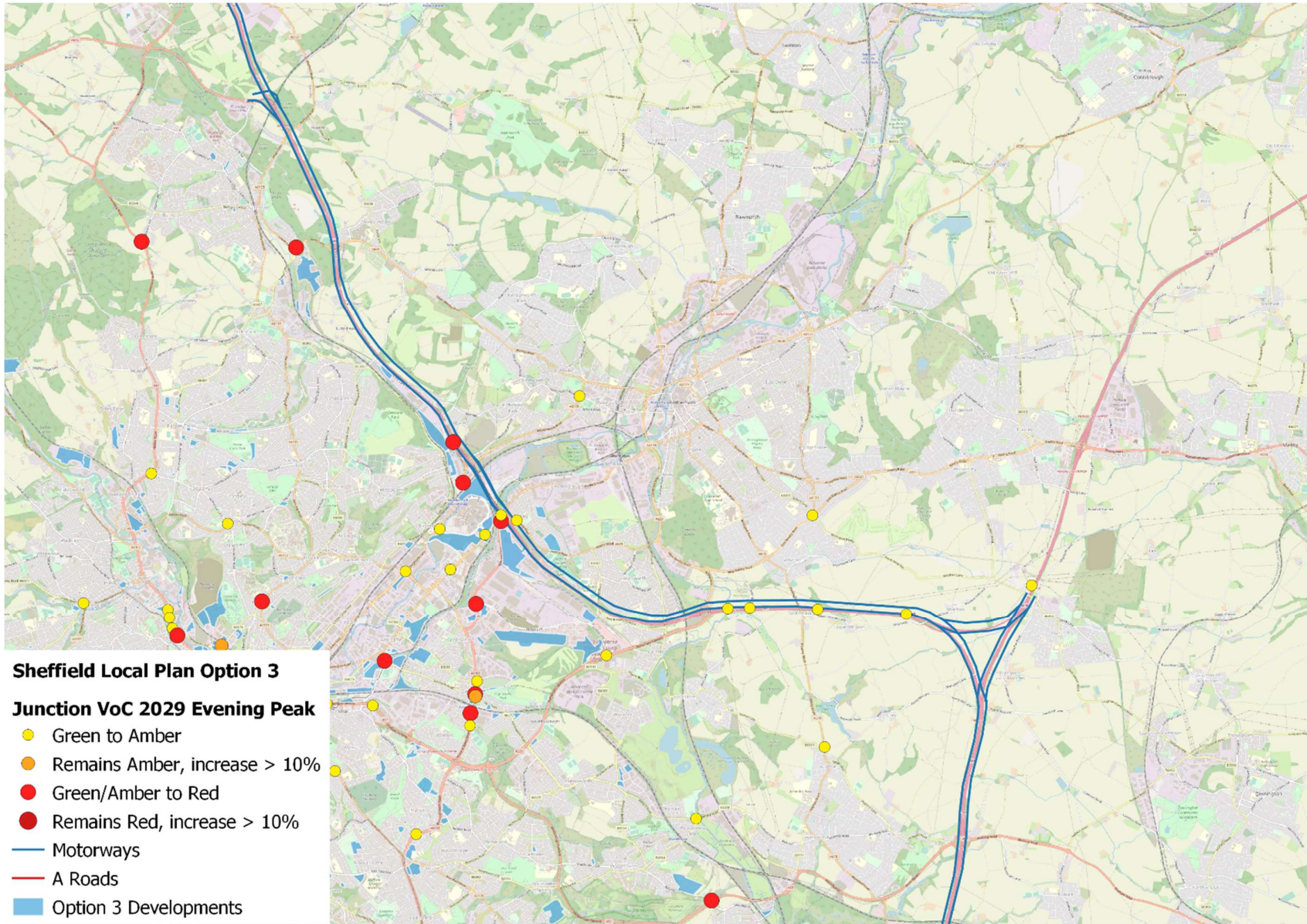


Figure 11. Forecast Changes in 2029 Junction VoC due to Local Plan – Evening Peak Hour – SRN

7.3 SRN – Summary of Impacts

7.3.1 When comparing the Reference Case and the Local Plan Scenario along the SRN, the most noticeable flow increases are forecast to occur on the section of the M1 between J33 and J35. Flow increases in this vicinity are variable by peak and specific link section, but are generally in the range 100 – 300 vehicles per direction.

7.3.2 Table 12 shows the junctions on the M1 which have an increase in VoC as a result of development traffic, together with an estimation of the severity of the impacts at each junction as a whole.

Table 12. Summary of Forecast Local Plan Impacts on the M1 in 2029

LINK / JUNCTION	SEVERITY OF CHANGE IN VOC			
	2029		2039	
	MORNING PEAK	EVENING PEAK	MORNING PEAK	EVENING PEAK
M1 Junction 33 – M1 Junction 32 (mainline carriageway)	Minimal	Minimal	Minimal	Moderate
M1 Junction 33 (On Slip Road: Merge)	Minimal	Minimal	Minimal	Moderate
M1 Junction 34 (South) - M1 Junction 33 (mainline carriageway)	Minimal	Minimal	Minimal	Moderate
M1 Junction 34 (South) (On Slip Road: Merge)	Minimal	Significant	Minimal	Significant
M1 Junction 34 (North) (On Slip Road: Merge)	Minimal	Moderate	Minimal	Moderate

	SEVERITY OF CHANGE IN VOC			
M1 Junction 34 (North) (Off Slip Road: Diverge)	Significant	Minimal	Significant	Minimal
M1 Junction 34 North (At Junction)	Minimal	Minimal	Minimal	Moderate
M1 Junction 35A (At Junction)	Minimal	Significant	Minimal	Significant
M1 Junction 35A - M1 Junction 36 (Mainline carriageway)	Minimal	Significant	Minimal	Significant
Overall Junction Impacts				
J31	Minimal	Minimal	Minimal	Minimal
J32	Minimal	Minimal	Minimal	Minimal
J33	Minimal	Minimal	Minimal	Moderate
J34 South	Minimal	Significant	Minimal	Significant
J34 North	Minimal	Significant	Minimal	Significant
J35	Minimal	Minimal	Minimal	Minimal

7.3.3 Forecast SRN capacity impacts are primarily concentrated on the section of the M1 between J34S and Junction 35. These comprise impacts on the mainline carriageway, the J34S merge, and the J34N merge and diverge. Impacts on this SRN section are forecast to be more significant in the evening peak hour.

7.3.4 The forecasting model suggests that the increases in traffic we see on this section of the SRN are mostly generated by the employment sites around the Meadowhall area

of Sheffield. The proportion of generated traffic from other Local Plan sites using the M1 is much lower.

7.3.5 Junction capacity issues are also forecast at J35 (junction with A629) in the evening peak hour.

8. PUBLIC TRANSPORT AND ACTIVE TRAVEL IMPACTS

8.1 Impact Measurement

- 8.1.1 This chapter presents an assessment of additional travel by public transport (PT) and active modes (walking and cycling) resulting from the Local Plan developments. The spatial distribution of additional PT and active travel demand is illustrated graphically and PT stops with potential for significant ridership increases are identified.
- 8.1.2 As discussed in Section 4.4 adjustments have been applied to the trip generation process to better match trip rates anticipated by stakeholders, in particular NH. These adjustments are not mode specific and so outturn mode shares from SCRTM1 are in line with the calibrated base model. Post model adjustments have been made, and are reflected in this chapter, to better match TRICS evidence for PT and active trip generation.
- 8.1.3 It should be noted that SCRTM1 does not constrain PT flows to available PT capacity as in the SATURN highway model. Therefore the outputs can be used to assess where additional PT supply may be beneficial.
- 8.1.4 Due to limitations in observed data the validation of the PT and active travel demand forecasts are meaningful at the broad level, but less reliable at the local level (eg bus stop). For this reason the assessment of PT and active travel interventions necessary to support the Local Plan (in a separate report) considers wider policy aims and good practice in addition to modelling outputs.
- 8.1.5 Capacity constraints are unlikely to be an issue for active modes. Areas where significant increases in active travel are forecast are presented graphically to identify areas where the quality of active travel provision will be reviewed in a separate study report.
- 8.1.6 It is important to stress that the results presented in this chapter are high-level Local Plan transport impacts as derived from the strategic SCRTM1 model. A more detailed description of public transport and active travel impacts, along with**

preliminary mitigation concepts, can be found in the “*Report on Public Transport and Active Travel Impacts and Preliminary Mitigation*” (September 2023).

- 8.1.7 This chapter focuses on the 2029 scenario. Headline results for 2039 are presented where appropriate to illustrate potential longer term travel demand changes, Detailed outputs for 2039 are provided in Appendix H and Appendix I.

8.2 Public Transport Impacts

- 8.2.1 The development of Local plan sites is forecast to increase daily 1-way PT trips by 31,213 in 2029) and 39,858 in 2039. The following Figures show modelled changes in public transport passenger flows (comparing the reference and Local Plan scenarios) in year 2029 (see Appendix H for 2039). There is a clear focus of additional PT demand in the city centre, which is already well served by public transport. Outside of the city centre there is limited additional PT demand in the vicinity of rail stations.
- 8.2.2 There are several Supertram stops with the potential to attract significant additional ridership. The total increase in PT demand (not just tram) is shown in Table 13. The largest increase in 2039 is around 450 one-way trips per hour at West Street which is approximately the capacity of 2 tram vehicles. These results have been shared with SYMCA to consider opportunities for enhancing Supertram services and / or investing in stop facilities.

Table 13. Forecast PT Demand Increases Near Supertram Stops (trips per hour)

NEAREST SUPERTRAM STOP	ORIGIN AM	DESTINATION AM	ORIGIN PM	DESTINATION PM
West Street	383	460	449	362
Shalesmoor	327	125	186	286
Castle Square	152	59	219	202
Granville Road/The Sheffield College	148	119	83	139
City Hall	147	61	117	143
Middlewood	135	114	90	102
Sheffield Station/Sheffield Hallam University	78	177	106	65
Cathedral	19	151	177	57
University of Sheffield	129	43	36	89

(Stops with an increase of fewer than 100 trips per hour not shown)

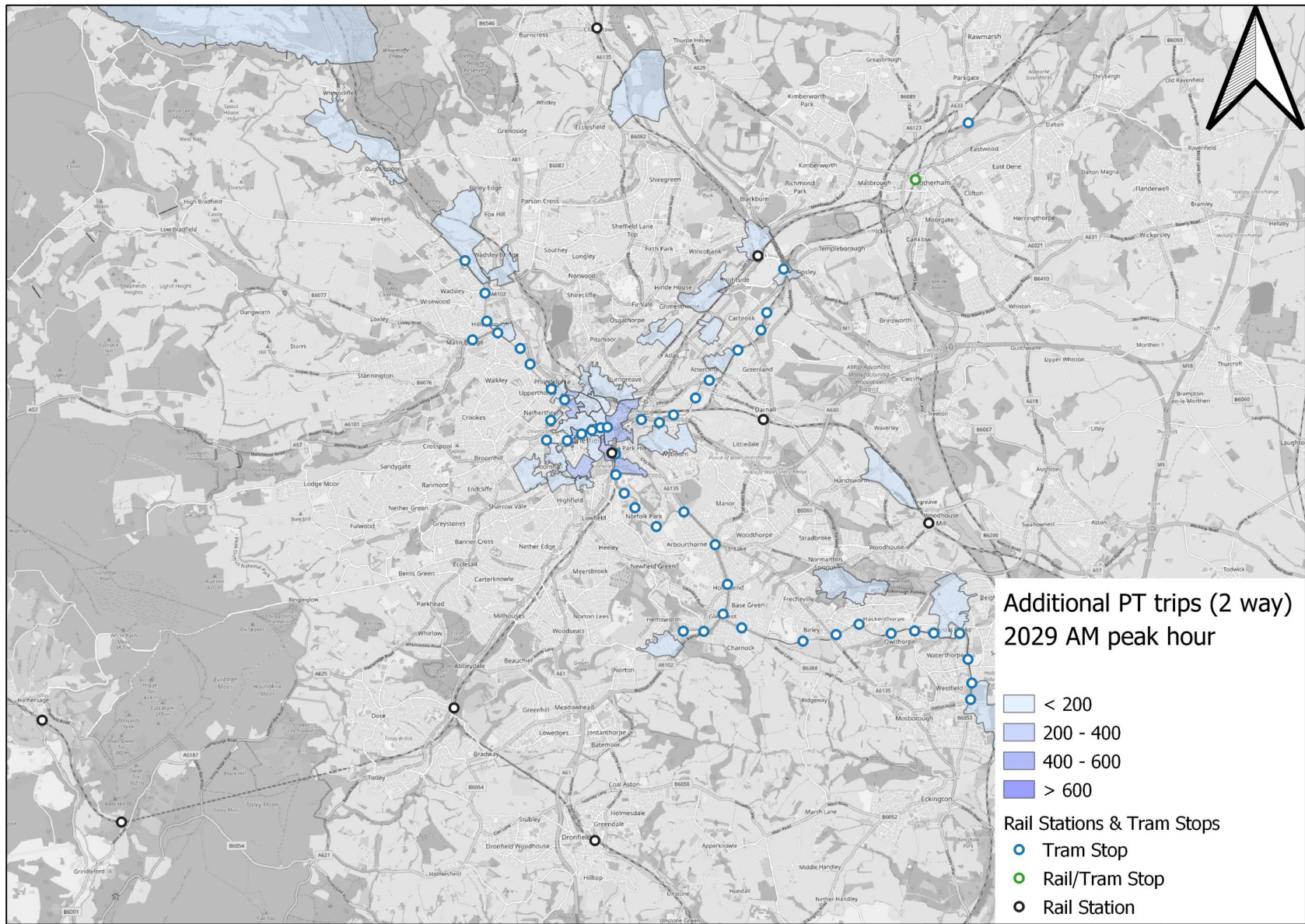


Figure 12. Forecast Public Transport Demand – 2029 AM Peak – Wide Area

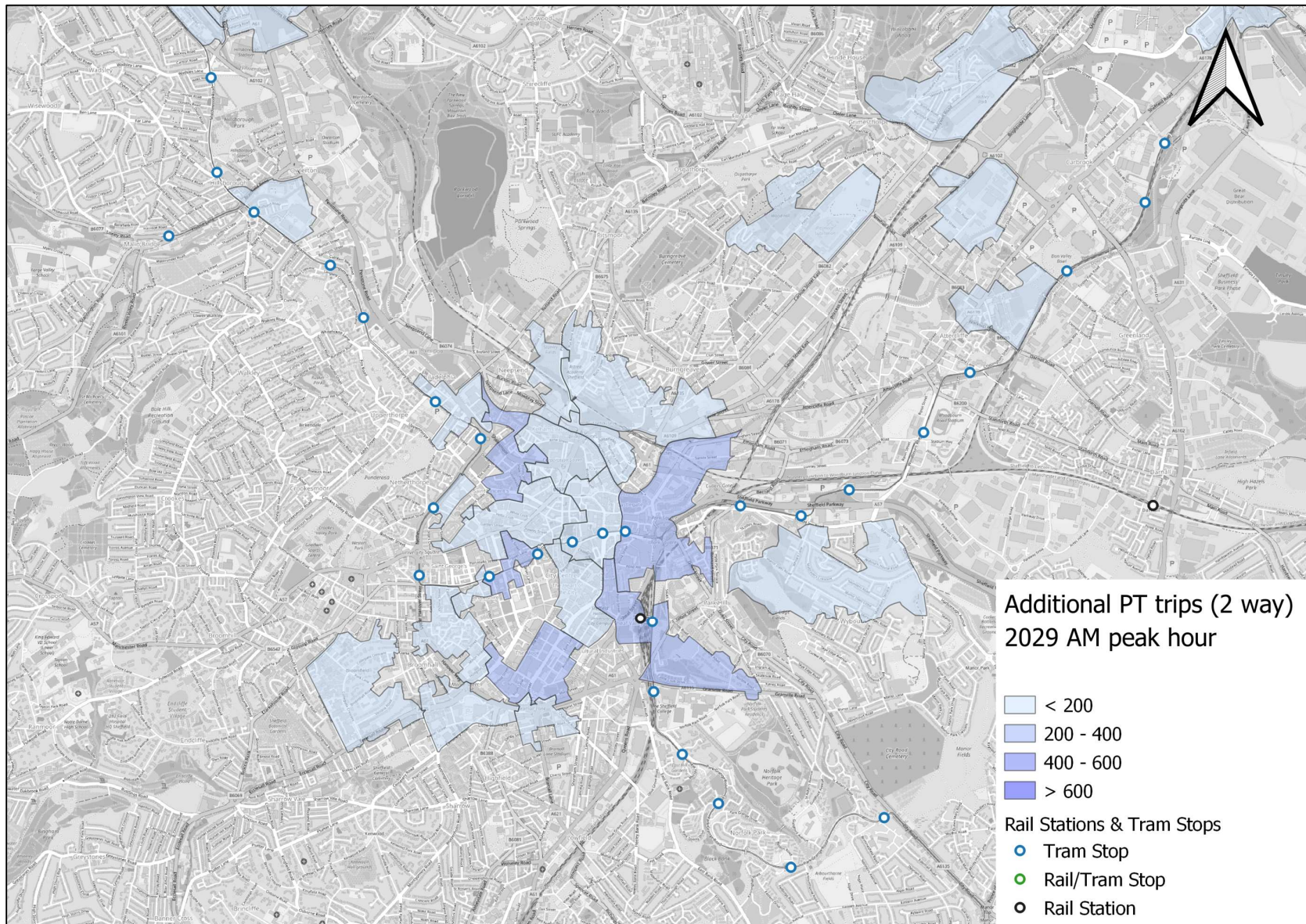


Figure 13. Forecast Public Transport Demand – 2029 AM Peak – Central Area

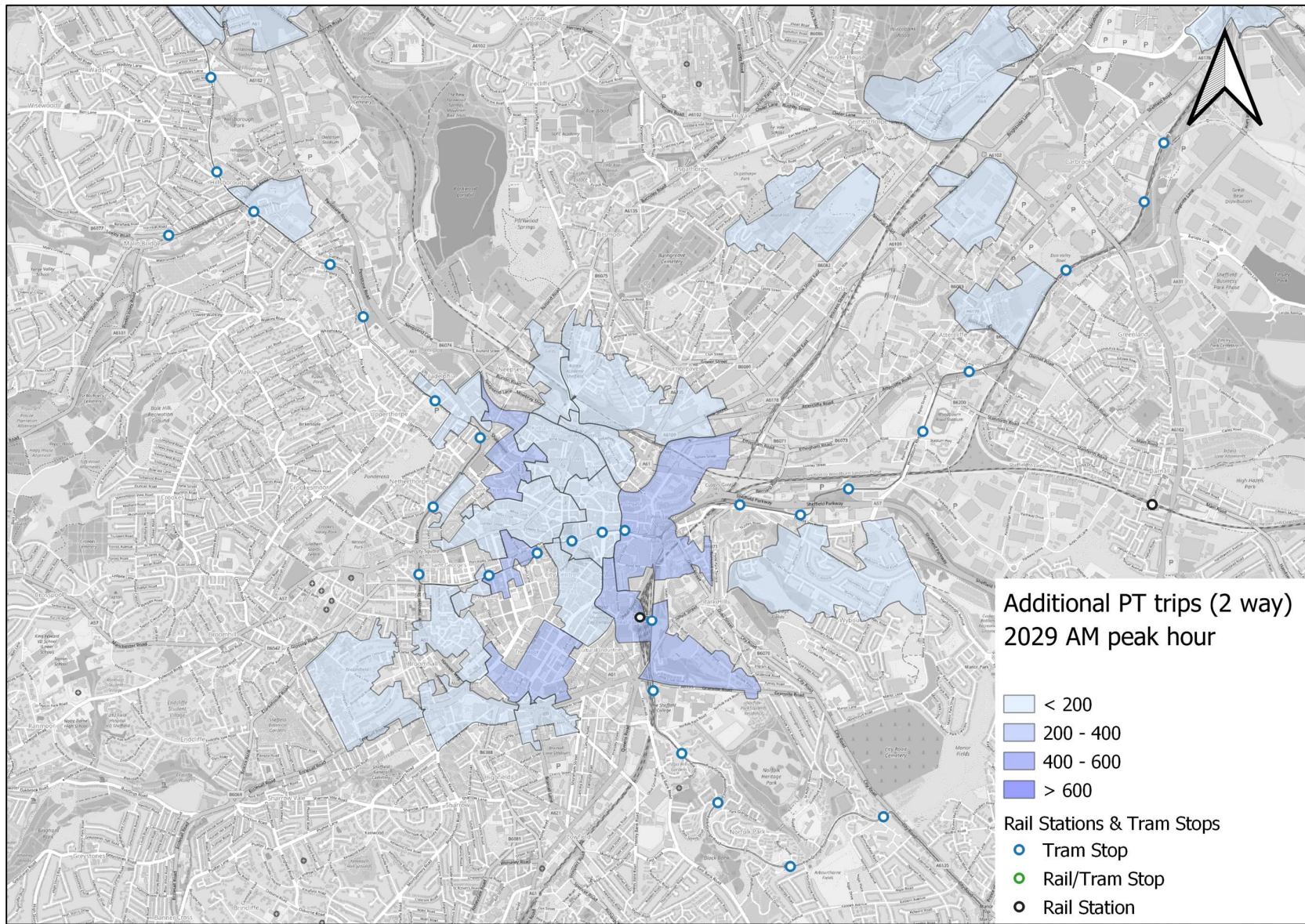


Figure 14. Forecast Public Transport Demand – 2029 PM Peak – Wide Area

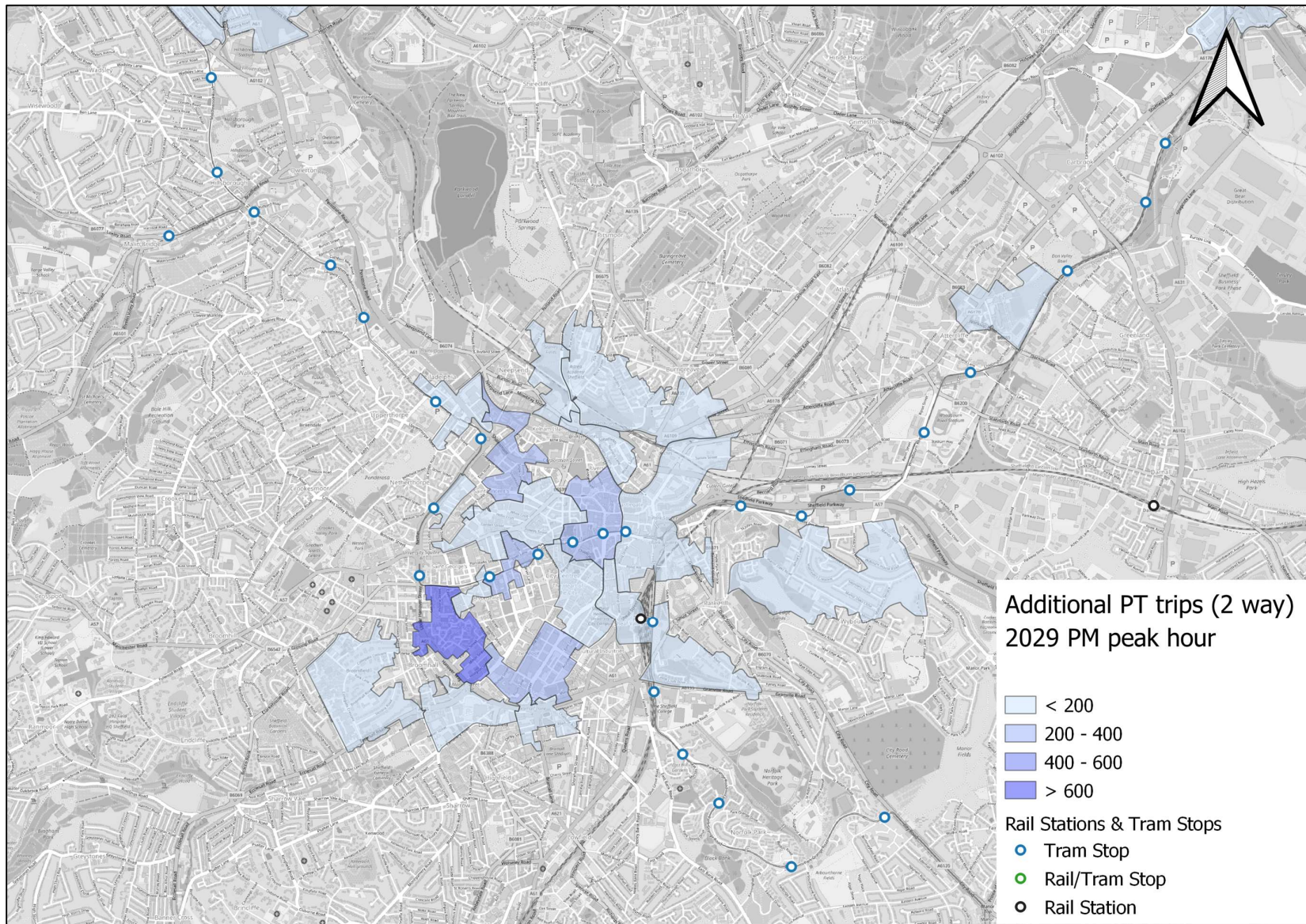


Figure 15. Forecast Public Transport Demand – 2029 PM Peak – Central Area

8.3 Active Travel Impacts

- 8.3.1 The development of Local plan sites is forecast to increase daily one-way active travel trips by 53,357 in 2029, and 70,258 in 2039. The following Figures show modelled changes in active travel flows (comparing the reference and Local Plan scenarios) in year 2029 (see Appendix I for 2039). Daily forecasts are presented because SCRTM1 does not assign active journeys to travel networks and so does not create hourly demand matrices.
- 8.3.2 Active travel demand is forecast to be widely dispersed, albeit with a focus in the city centre. There is a cluster of around 1,200 planned dwellings and 32,000 m² mixed use floorspace south of St Mary's Gate which generates the largest volume of active travel demand. We will give consideration to enhancing walking and cycling routes between this area and the city centre in our assessment of mitigation measures (see Figure 18 for the current situation).

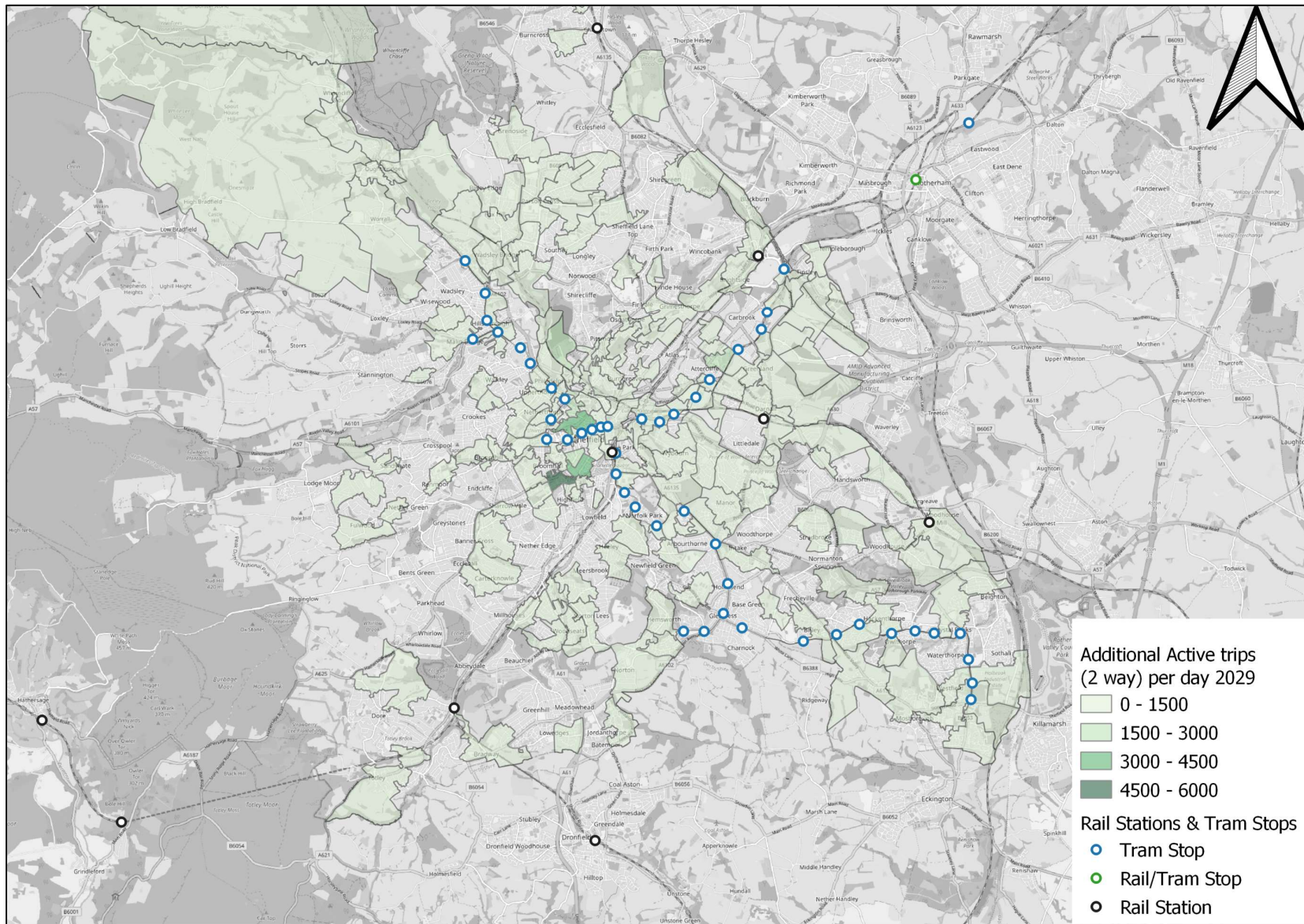


Figure 16. Forecast Changes in 2029 Active Travel Demand (24 hour, 2-way) due to Local Plan – Wider Area

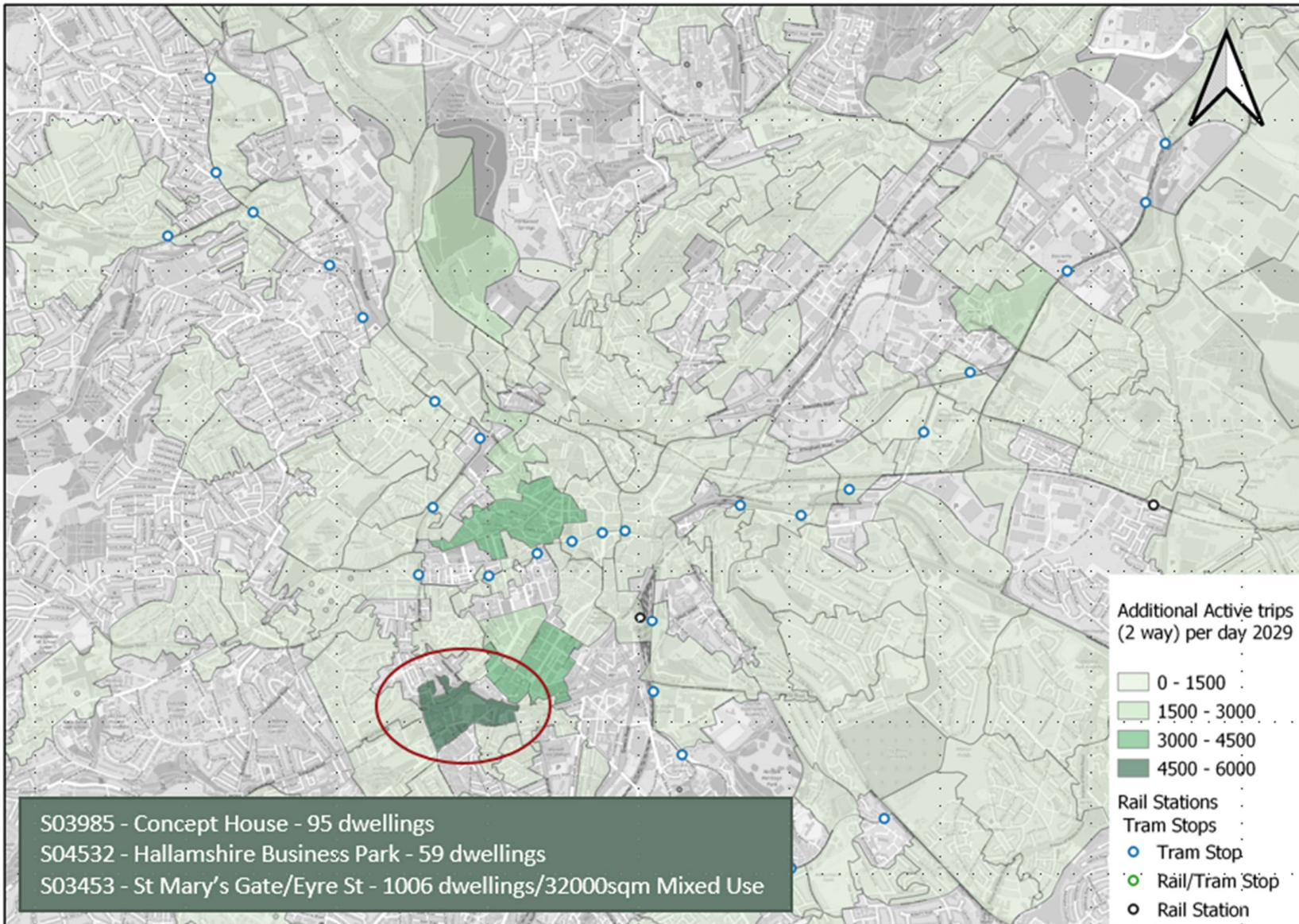


Figure 17. Forecast Changes in 2029 Active Travel Demand (24 hour, 2-way) due to Local Plan – Central Area

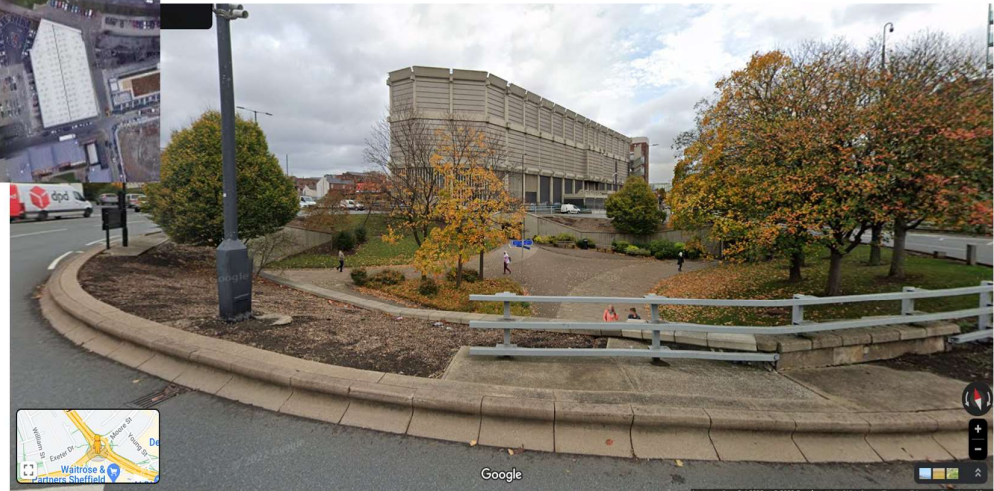
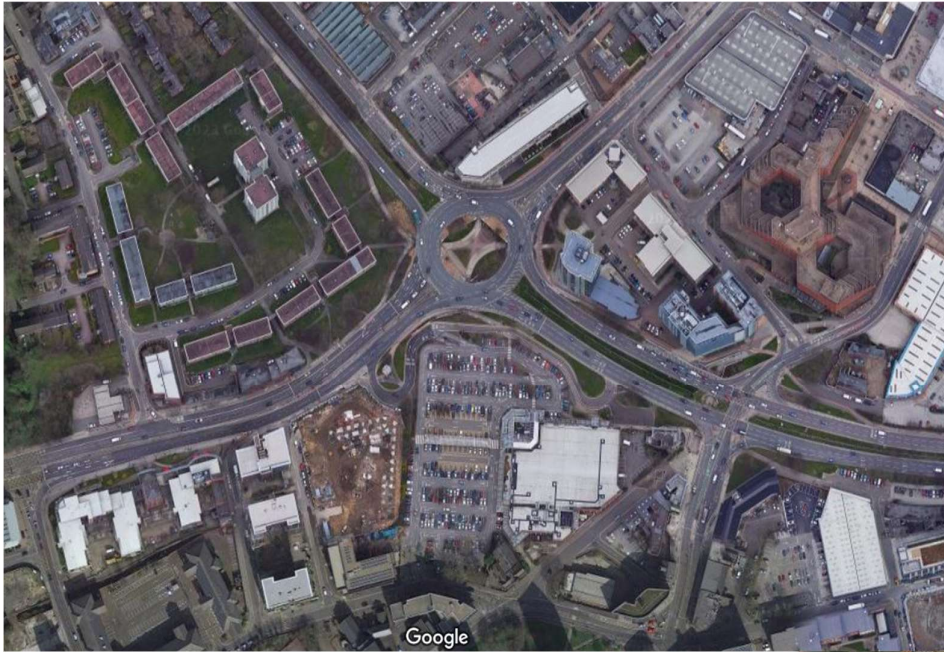


Figure 18. St Mary's Gate / Moore Street Crossings

9. SUMMARY AND CONCLUSIONS

9.1 Summary

- 9.1.1 SYSTRA have been investigating the expected transport impacts of the Sheffield Local Plan via a range of tools including an enhanced version of the Sheffield City Region Transport Model 1 (SCRTM1), Aimsun microsimulation modelling and local junction modelling techniques. This report documents preliminary findings at a city-wide level. The work has been undertaken in conjunction with Sheffield City Council (SCC) and in consultation with National Highways (NH) and neighbouring authorities.
- 9.1.2 Local Plan transport impacts are considered in relative terms (ie. relative to the respective future year Reference scenario) rather than in absolute terms. This city-wide assessment has focused upon identifying ‘zones of impact’, i.e. defined sub-areas where the main impacts of each of the strategic sites will be felt. The results presented in this report are preliminary; further inputs and stakeholder sign-offs are required before the work can be considered as a comprehensive transport evidence base.
- 9.1.3 At the broad city-wide level, the following transport impacts have been identified:
- Local Road Network impacts at the Inner Ring Road, and Lower Don Valley district
 - Strategic Road Network impacts are primarily concentrated on the M1, at Junction 34 South (junctions with A631 and A6178), and Junction 34 North (junctions with A6178 and A6109)
 - Additional public transport demand in the city centre, which is already well served by public transport
 - Increased active travel demand, widely dispersed across the city
- 9.1.4 It is worth reiterating that the transport impacts outlined above are derived from the strategic city-wide assessment. The more localised assessments being undertaken in parallel may identify other issues. Discussion of these can be found in the other reports referenced in Section 2.3.

9.2 Conclusions and Next Steps

- 9.2.1 In SYSTRA's view, this report sets out an overarching summary of the expected city-wide transport impacts of the Sheffield Local Plan. As would be expected, the impacts are considerable and vary in their intensity by mode and district.
- 9.2.2 Further work is needed to confirm the scale of transport demand changes at a local level with key stakeholders such as National Highways. This work is ongoing and is considering district / local level capacity impacts along with suitable interventions to address these. Once intervention measures have been identified, these would need to be discussed, their effectiveness confirmed and an outline implementation plan developed.
- 9.2.3 For the LRN, beyond the work which has been undertaken to date it is intended to complete the following specific tasks:
- Review LRN mitigations in line with the comments from SCC internal technical teams
 - Confirm / refine proposed mitigation schemes as defined in this report;
 - Test and confirm effectiveness of LRN schemes in mitigating identified issues;
 - Review Aimsun modelling of City Centre and Lower Don Valley;
 - Identify junctions which require mitigation within Aimsun Model area in conjunction with SCC, Fore and Arup
 - Design and test mitigation schemes within Aimsun model area in conjunction with SCC, Fore and Arup
 - Confirm cumulative effectiveness of proposed mitigation measures via a With Mitigation SCRTM1 model run
- 9.2.4 The next steps in relation to the SRN are:
- Agree traffic flows to be input to the detailed SRN capacity analyses with NH and their representatives for all scenarios
 - Agree assessment tools for all assessed SRN locations with NH and their representatives
 - Validate base junction models using existing data where possible

- Review merge / diverge analysis in line with flows agreed with NH and their representatives
- Review junction analysis in line with flows agreed with NH and their representatives
- Discuss results of detailed SRN capacity analyses with NH, together with relevant Local Authorities, and confirm findings
- Refine / derive mitigation measures for identified issues on the SRN
- Discuss and confirm mitigation proposals with NH and their representatives
- Undertake costing of mitigation proposals

9.2.5 Further SCRTM1 model runs will then be undertaken to reflect the cumulative multi-modal impact of all of the proposed Local Plan mitigation measures.

9.2.6 By completing these tasks, it is expected that a comprehensive picture can be established demonstrating the full impact of Sheffield's Local Plan on the Strategic Highway Network.

9.2.7 Any potential interventions put forward would need to consider the wider transport policy perspective, both within Sheffield itself and across the wider city region. Specifically, the Local Plan interventions would need to align with:

- Sheffield Local Plan – Infrastructure Development Plan (IDP)
- Sheffield Transport Strategy (March 2019)

SYSTRA provides advice on transport, to central, regional and local government, agencies, developers, operators and financiers.

A diverse group of results-oriented people, we are part of a strong team of professionals worldwide. Through client business planning, customer research and strategy development we create solutions that work for real people in the real world.

For more information visit www.systra.co.uk

Birmingham – Newhall Street

5th Floor, Lancaster House, Newhall St,
Birmingham, B3 1NQ
T: +44 (0)121 393 4841

Birmingham – Edmund Gardens

1 Edmund Gardens, 121 Edmund Street,
Birmingham B3 2HJ
T: +44 (0)121 393 4841

Dublin

2nd Floor, Riverview House, 21-23 City Quay
Dublin 2, Ireland
T: +353 (0) 1 566 2028

Edinburgh – Thistle Street

Prospect House, 5 Thistle Street, Edinburgh EH2 1DF
United Kingdom
T: +44 (0)131 460 1847

Glasgow – St Vincent St

Seventh Floor, 124 St Vincent Street
Glasgow G2 5HF United Kingdom
T: +44 (0)141 468 4205

Leeds

100 Wellington Street, Leeds, LS1 1BA
T: +44 (0)113 360 4842

Liverpool

5th Floor, Horton House, Exchange Flags, Liverpool,
United Kingdom, L2 3PF
T: +44 (0)151 607 2278

London

3rd Floor, 5 Old Bailey, London EC4M 7BA United Kingdom
T: +44 (0)20 3855 0079

Manchester – 16th Floor, City Tower

16th Floor, City Tower, Piccadilly Plaza
Manchester M1 4BT United Kingdom
T: +44 (0)161 504 5026

Newcastle

Floor B, South Corridor, Milburn House, Dean Street, Newcastle, NE1
1LE
United Kingdom
T: +44 (0)191 249 3816

Perth

13 Rose Terrace, Perth PH1 5HA
T: +44 (0)131 460 1847

Reading

Soane Point, 6-8 Market Place, Reading,
Berkshire, RG1 2EG
T: +44 (0)118 206 0220

Woking

Dukes Court, Duke Street
Woking, Surrey GU21 5BH United Kingdom
T: +44 (0)1483 357705

Other locations:

France:

Bordeaux, Lille, Lyon, Marseille, Paris

Northern Europe:

Astana, Copenhagen, Kiev, London, Moscow, Riga, Wroclaw

Southern Europe & Mediterranean: Algiers, Baku, Bucharest,

Madrid, Rabat, Rome, Sofia, Tunis

Middle East:

Cairo, Dubai, Riyadh

Asia Pacific:

Bangkok, Beijing, Brisbane, Delhi, Hanoi, Hong Kong, Manila,
Seoul, Shanghai, Singapore, Shenzhen, Taipei

Africa:

Abidjan, Douala, Johannesburg, Kinshasa, Libreville, Nairobi

Latin America:

Lima, Mexico, Rio de Janeiro, Santiago, São Paulo

North America:

Little Falls, Los Angeles, Montreal, New-York, Philadelphia,
Washington

The SYSTRA logo is displayed in a bold, red, sans-serif font. The letters are thick and blocky, with a slight shadow effect behind them, giving it a three-dimensional appearance. The 'S' and 'Y' are particularly prominent due to their size and shape.