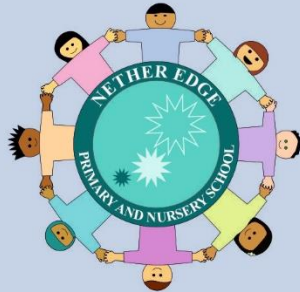


APPLICANT

PACK



NETHER EDGE PRIMARY



Realising Potential. Transforming Lives.

Advert

Post: KS2 Teacher
Contract term: Maternity Cover
Contract Type: 1.0 FTE
Salary: Teachers' Pay Scales
Commencement Date: January 2023

We are looking for an ambitious and talented individual to join our exceptional team for a maternity cover. We are an outstanding school who always work hard to make our practice as good as it possibly can be for all the children. This is an opportunity to make your mark and make a difference.

You will be responsible for the implementation and impact of our curriculum through the delivery of exceptional teaching and learning to all pupils. This will ensure they achieve the very best that they can.

Candidates must have the ability to engage, inspire and motivate both pupils and colleagues and have the strategic vision to be part of the team moving our vibrant school forward.

Teaching Responsibilities include:

- Deliver engaging and effective lessons that meet the needs of all students in the class.
- Develop and implement a curriculum that is aligned with the National Curriculum and school policies.
- Provide regular feedback and assessment to students and their parents/carers on progress and achievement.
- Work collaboratively with colleagues to ensure consistency of practice and high standards across the school.
- Support and encourage student well-being, ensuring that all students are able to achieve their full potential.

Working at Nether Edge Primary offers a supportive and collaborative team committed to providing high-quality education to all students. You will have Access to professional development opportunities and resources to support your growth as an educator. This role offers an opportunity to make a real difference to the lives of children in our vibrant and diverse community. Teaching at Nether Edge Primary School is a rewarding and fulfilling career choice, and we are proud to offer our staff the chance to be a part of this important work.

If you are a dedicated and passionate teacher with a desire to make a real difference in the lives of children, then we want to hear from you.

To apply, please submit a Mercia Learning Trust Application to recruitment@merciatrust.co.uk. Please note we do NOT accept CV's or Council Application Forms.

Closing Date: Midnight Wednesday 11th October 2023

Interviews: Week commencing 16th October 2023

Headteacher's Message

Thank you for your interest in joining Nether Edge Primary School. This is an excellent opportunity to join a great school and to play a key role in shaping the provision of education for our children.

Nether Edge is a happy, thriving school providing high quality education both in the classroom and throughout a wide range of extra-curricular activities. We are very proud of our children and believe they should perform well academically and also develop as people.



Nether Edge Primary is part of Mercia Learning Trust along with King Ecgbert School, Mercia School, Newfield School, Totley Primary and Woodlands Primary.

Our expectations for every Nether Edge child are high; excellence and enjoyment are at the heart of all we will seek to do. We believe in the potential of every child, providing opportunities and enabling them to thrive in our caring environment.

Our staff team are central to our success. They drive and accelerate the outstanding provision we offer to our community and we want the very best people to join us.

If you feel you have the skills, drive and ambition to help support our aims then please do read on.

Michele Nott
Headteacher

Job Description

Post Title:	KS2 Teacher *This post is a designated customer facing role under the fluency duty and requires a specified level of spoken English in the person specification
Salary:	Teacher's Pay Scale
Responsible to:	Headteacher
Responsible for:	N/A

The post holder must at all times carry out his/her responsibilities within the spirit of Mercia Learning Trust and School policies and within the legislative framework applicable to academies.

PURPOSE OF THE POST

- To teach designated pupils and undertake associated pastoral and administrative duties as well as other general responsibilities, having full regard for the school's ethos, aims and policies.
- To undertake tasks related to the development of a curriculum area.

EMPLOYMENT DUTIES

- To be performed in accordance with the provisions of the School Teachers' Pay and Conditions document and within the range of teachers' duties set out in that document (Part XII of the 'Teachers Pay and Conditions Document').

KEY RESPONSIBILITIES

- To pursue the aims of the school in a positive manner and promote the agreed ethos.
- To work co-operatively within a whole staff team, and within the year/teaching and learning group to achieve continuous improvement with constant regard to quality in both learning and teaching.
- To teach pupils according to their individual needs, including the planning and assessment of work in line with agreed policies of the school
- To monitor and assess children's progress and report to parents.
- To implement and maintain the school's policy on discipline and behaviour.
- To support the school's endeavours to meet the needs of its community.
- Participate in the school's performance management process.

- To promote and monitor the organisation of the learning and teaching through a particular subject throughout the school.

CLASS TEACHER DUTIES

- To plan programmes of work for pupils in co-operation with teaching colleagues within the team in order to ensure that all children are taught by members of that team experience similar learning opportunities.
- To plan work matched to the individual needs of children and within the school's agreed policy and schemes of work.
- To produce written records of such planning in accordance with school policy
- To assess and record pupil's achievements and progress within the statutory requirements and school's assessment policy and report to parents.
- To contribute to meetings, discussions and management systems necessary to ensure the coordination of the work of the school as a whole.
- To ensure that the classroom is kept tidy and attractive, with children's resources readily available for them to find independently.
- To contribute to the ideas within and the implementation of the School Improvement Plan
- To supervise the use of support staff relevant to the class
- To contribute to the provision of a safe and secure learning environment.

WORKING ENVIRONMENT AND CONDITIONS OF THE POST

- The post may be required to travel and work within any school in the Mercia Learning Trust

GENERAL DUTIES

- To contribute to whole school events as and when required
- To ensure accurate records are securely maintained and held in accordance with General Data Protection Regulations (GDPR)/Data Protection Act 2018
- Be aware of and support diversity, ensuring equal opportunities for all
- Develop professional, constructive relationships with other agencies, schools and professionals
- Participate in meetings, training and performance development as necessary
- Recognise own strengths and areas of expertise using these to advise and support others
- Be willing to undertake training and professional development as required of the post
- Any other duties and responsibilities appropriate to the grade and role

PROMOTION OF TRUST VALUES

- To contribute to the overall development of Mercia Learning Trust to ensure the Trust operates on the basis of shared and collective responsibility
- To contribute to the overall ethos, work and aims of Mercia Learning Trust
- To support and contribute to the Trust's commitment to safeguarding all students. All schools in the Mercia Learning Trust are committed to safeguarding and promoting the welfare of children and young people. Therefore, all employees are expected to share this commitment.
- To contribute to trust partnership activities to drive school and trust improvement
- To be aware of the school's duty of care in relation to staff, students and visitors and to comply with all health and safety policies at all times
- To be aware of and comply with the codes of conduct, regulations and policies of the School and its commitment to equal opportunities
- All the above duties and responsibilities to be carried out in accordance with policies adopted by the School Governing Body and current legislation with an emphasis on Customer Care, Equal Opportunities, Data Protection and Health and Safety

This job description is current at the date indicated below but, in consultation with the post holder, it may be changed by the Headteacher to reflect or anticipate changes in the post commensurate with the grade or job title.

Issue Date: March 2023

Person Specification

Post Title:	Teacher *This post is a designated customer facing role under the fluency duty and requires a specified level of spoken English in the person specification
Salary:	Teacher's Pay Scale
Responsible to:	Headteacher
Responsible for:	N/A

SPECIFICATION	ESSENTIAL	DESIRABLE
Qualifications and Training	Qualified Teacher status	Evidence of further educational study or qualification

	<p>Teaching degree or equivalent (BA, BEd, PGCE etc.)</p> <p>Evidence of continuous INSET and commitment to further professional development</p>	
<p>Skills and Knowledge</p>	<p>The ability to communicate clearly and take into account, where appropriate, the views of others</p> <p>Excellent personal organisational skills</p> <p>A flair for teaching and the ability to contribute and work as a member of a strong team.</p> <p>An inspirational, committed and highly effective classroom practitioner who is dedicated to achieving the best outcomes for each individual child.</p> <p>Effectively communicate orally and in writing to a range of audiences</p> <p>Maintain a calm level of professionalism at all times.</p> <p>Effectively fulfil and be willing to develop further the expectations of the Teachers Standards.</p> <p>An ability to create a warm, positive and motivating learning experience for children.</p> <p>A commitment to raising attainment</p>	<p>Knowledge of using a range of assessment tools.</p> <p>Good time management skills</p> <p>Enthusiasm and willingness to contribute to and participate in the wider context of school life.</p>

Experience	<p>An up-to-date and working knowledge of the National Curriculum.</p> <p>Knowledge of appropriate resources and strategies which support outstanding teaching and learning opportunities.</p> <p>Good knowledge and understanding of learning and teaching at Key Stage 1 and 2</p> <p>Working knowledge and experience of Assessment for Learning; and assessing without levels</p> <p>Excellent subject knowledge</p> <p>Excellent classroom management skills</p>	<p>Experience of intervention processes to raise achievement.</p> <p>Experience of teaching across the age and ability range at Key Stage 1 and 2</p> <p>Interest in or experience of leading a subject area.</p> <p>Experience of working in a larger school</p>
Personal Qualities	<p>Energy and enthusiasm</p> <p>Reliability and integrity</p> <p>Sense of Humour</p> <p>Excellent record of health, punctuality and attendance</p> <p>A commitment to the ethos of the school</p> <p>Commitment to your continuing professional development</p>	<p>Adaptability to changing circumstances & ideas</p>

The Application Process

All candidates must complete the following application process.

- All applicants must submit a Trust application form. We do not accept CVs or Council Forms. The application form can be found under 'Careers' at www.merciatrust.co.uk
- Email your completed application to recruitment@merciatrust.co.uk or post it to:

MLT Recruitment Team
Mercia Learning Trust
79 Glen Road
Sheffield, S7 1RB

After your application has been submitted:

- In all cases written references will be taken up and made available to interviewers BEFORE the final selection stage.
- All applications that have been submitted via email will receive an email confirming receipt.
- An email and/or letter will be sent to shortlisted candidates with details of the interview process.
- If you have not heard from us within 2 weeks of the closing date, please assume that on this occasion, your application has been unsuccessful.

Further information:

- Take a look at www.merctrust.co.uk/careers for more on what it's like working for the trust, what we offer you, and what we're looking for.
- Should you require any additional information about the role or the school, or would like an informal discussion or out of hours visit, please contact us on 0114 255 0926 or enquiries@netheredge.sheffield.sch.uk.
- For more information about the application process, please email recruitment@merctrust.co.uk.

Key dates:

- **Closing Date Midnight Wednesday 11th October 2023**
- **Interviews week commencing 16th October 2023**

The small print:

- Mercia Learning Trust is committed to safeguarding and promoting the welfare and safety of children and young people and expects all staff to share this commitment. If you are shortlisted, your suitability to work with children will be explored, and this will include disclosing convictions. The information you disclose may be discussed with you during the interview.
- The successful candidate will therefore be required to complete a DBS check in line with the Rehabilitation of Offenders Act (ROA) 1974 (Exceptions) Order 1975 and the Police Act Regulations.
- We are an Equal Opportunities employer. Our staff are recruited and promoted on the basis of their merits and abilities and no job applicant or employee receives less favourable treatment on the grounds of racial group, origin or nationality, sex, disability, marital status, age, sexual orientation, political or religious beliefs or trade union activity. Please indicate whether there are any reasonable adjustments or access requirements you would need to help you to attend an interview. If you wish to discuss your requirements prior to submitting

your form, please contact the Human Resources Team on 0114 349 4230. Alternatively, please give details on a separate sheet and return with your application form.