



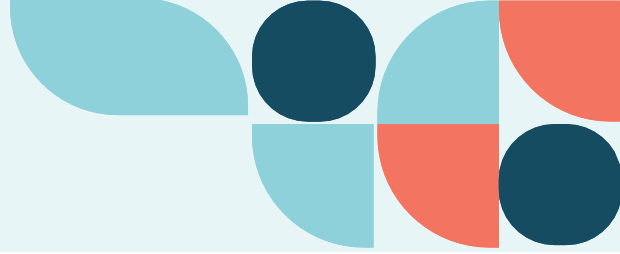
SEND Funding

Sheffield Education Funding Forum

25 June 2024



EHC Plan Top-up Funding – Initial development activity



- We have procured a resource allocation system (also referred to as an education banding tool) from Imosphere called '**Formulate for SEND**'
- Between September 2023 and March 2024 we submitted a needs profile for over 500 young people with EHC plans (488 mainstream)
- The needs profile captures nine core areas of education, plus two additional areas – risk of actual harm and sensory needs
 - Practitioners respond to a multiple-choice question for each area
 - This results in an overall band from 0 – 10, with 10 at the highest
 - Band 0 represents no identified SEND
 - The bands are independent of any educational setting, all young people with EHC Plans would fall within bands 0-10



Moderation and verification

- On 8 May we held a moderation and verification day
- Educational Psychology and Autism Team
 - Moderation of outlier cases and within specialty
- Access & Inclusion Team
 - Moderation across cases input so far
 - Costing activity
- Citywide SENCOs
 - Overview of the tool with Q&A
 - Inputting activity – new case
 - Overview and moderation of cases input so far with provision maps

Costing activity

- We costed the provision for 200 mainstream EHC Plans and have submitted this information to Imosphere for analysis
- Imosphere will share their initial findings with us on 7 June, we will then undertake further activity to ensure that our banding values are robust
- We are undertaking more focused costing activity with schools to develop this initial information and give a wider perspective
- Using this work, local information and national benchmarking values, we will develop proposed values for bands 1-10
- We will work with partners across the city to develop these values, moderate the output and consider the affordability of the overall funding required

SEND funding for 2024/25

- Processes largely remain the same for 24/25 as they were this year
 - Initial block funding will be issued directly to schools in September and April
 - Remaining locality funding is delegated to localities for distribution
 - Additional funding for the targeted pupil element of the locality allocation
- Exceptional needs funding applications will be considered for existing EHC plans
- Newly issued EHC plans will be funded centrally by the LA
- Existing EHC plans will be input in 24/25 and funded centrally for 25/26

Locality Funding from September 2025

- Currently funding is split into three areas
 - Direct pupil funding
 - Leadership and co-ordination
 - Strategic intervention and support
- Agreement that Locality Lead SENCOS will be funded at £10K which equates to one day per week each from the central high needs block
- We will co-produce a new model for September 2025 considering a range of options
- We are working with parent/carer representative and partners across the sector to develop the new funding model
- We will consult and update more widely throughout the year

Draft principles to consider

- **All children and young people belong**
 - Every effort will be made to meet their needs within their local mainstream school/setting and the local community, promoting inclusivity.
- **Early intervention – protective and preventative support**
 - We endeavour to meet children and young people’s needs without escalation to EHC Needs Assessment where possible.
- **Consistency across the city**
 - The same processes across mainstream schools in the city, although provision will be sensitive to local needs.
- **Simplicity**
 - Simple administrative processes, allowing time to be focussed on activity that impacts children and young people.
- **Accountability and impact**
 - We must be able to evidence the impact of funding or provision.
- **Data/information driven decisions and actions**
 - We will use local intelligence to influence decision making and activity.

Appendix



Visual of the Formulate Needs Profile

You are editing: Formulate Child & Young Person's Needs Profile (Education) V4.1

Form

Calculation

Use previous answers

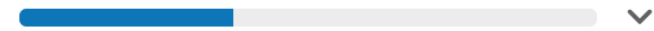
Export

Finalise Form

Delete

Progress

Autosave



Who is this form for?

Core background information

Education

Preparing for further education and adulthood

Health and well-being

Additional factors which may affect funding

Education areas

Communicating well

Achieving potential for learning



Developing and enjoying recreation activities and community inclusion

Forming positive relationships

Maintaining emotional well-being

Dealing successfully with change within an education setting

Areas covered by the Formulate Needs Profile

1. Communicating well
2. Achieving potential for learning
3. Developing and enjoying recreation activities and community inclusion
4. Forming positive relationships
5. Maintaining emotional well-being
6. Dealing successfully with change within an education setting
7. Being independent with self-care
8. Being independent with mobility and motor-skills
9. Managing behaviour

Plus an additional two areas:

1. Risk of accidental or intentional harm when in an education setting
2. Impact of sensory impairment and/or processing difficulty